



GfG Instrumentation



2017 Price Catalog

Portable Gas Detection and Respiratory Airline Monitors

Rev. 3.1 (04/12/17)

About GfG Instrumentation

Our Mission

GfG Instrumentation is committed to the protection of life and property by developing and producing the safest and most reliable gas detection equipment available, and to continuously make improvements through constant attention to customer expectations and advancing industry standards.

GfG Instrumentation is a world leader for gas detection and measurement technology. For over 50 years the company has specialized in developing and producing the safest and most reliable equipment and sensors available. Offering an extensive range of portable monitors, fixed systems, and respiratory air monitors, GfG provides diverse solutions for toxic, explosive, and oxygen gas detection.

GfG equipment is used in a wide variety of applications and industries including automotive, chemical industries, landfills, steel industries, hospitals, mining, public utilities, food processing, research institutes, universities, and wherever the protection of life and property is needed.

Products are developed by a team of highly qualified scientists of various disciplines, engineers and technicians, working in cooperation with leading research institutions, bringing practice and theory together.



Specially trained engineers and technicians form a team for consulting, planning, installing and servicing before, during, and after the sale to assist the customer in making the best decision. Supporting a worldwide sales and distribution network, GfG Instrumentation has established production facilities around the world in the United States, Germany, South Africa, Switzerland, and Singapore.

Specific training is offered for users to become qualified with the operation and maintenance of the equipment to ensure the highest performance and deliver uncompromising safety, reliability, and convenience in the workplace.

Table of Contents

Product Selection Guide	2
-------------------------	---

Single-gas Detectors

Micro IV Single-gas Detector	3
G300 Portable Leak Detector	7

Multi-gas Detectors

G450 Multi-gas Detector	9
G450 Configurator	15
G460 Multi-gas Detector	16
G460 Configurator	25
DS400/DS404 Docking Stations and TS400 Test Station	26

Respiratory Airline Monitors

RAM 744 Respiratory Airline Monitor	29
RAM 4021 Respiratory Airline Monitor	31

Other Information

Portable Calibration Gas	34
Portable Gas Detection Warranty	36
GfG Customer Services	37
GfG Sales and Marketing Support	38
GfG Worldwide	41

Product Selection Guide

Features

	Single-gas		Multi-gas		Respiratory Airline Monitors	
	Micro IV	G300	G450	G460	RAM 744	RAM 4021
Number of Gases	1	1	1 - 4	1 - 6	1	1-2
Water Resistant			•	•		
Datalogging	•		•	•		
Event logging	•		•	•		
Docking Station Available	•		•	•		
Pump	Optional		Optional	Optional		

Gases

	Single-gas		Multi-gas		Respiratory Airline Monitors	
	Micro IV	G300	G450	G460	RAM 744	RAM 4021
Oxygen (O ₂)	•		•	•		•
Combustible (LEL)		•	•	•		
Carbon Monoxide (CO)	•		•	•	•	•
Hydrogen Sulfide (H ₂ S)	•		•	•		
Ammonia (NH ₃)	•	•		•		
Carbon Dioxide (CO ₂)				•		
Chlorine (Cl ₂)	•			•		
Chlorine Dioxide (ClO ₂)	•			•		
Dew Point (DP)						•
Ethylene Oxide (C ₂ H ₄ O or ETO)	•			•		
Freons®		•				
Hydrogen (H ₂)	•	•		•		
Hydrogen Chloride (HCl)	•			•		
Hydrogen Cyanide (HCN)	•			•		
Hydrogen Fluoride (HF)	•			•		
Methane (CH ₄)		•	•	•		
Methyl Mercaptan (CH ₃ SH)	•			•		
Nitric Oxide (NO)	•			•		
Nitrogen Dioxide (NO ₂)	•			•		
Ozone (O ₃)	•			•		
Phosgene (COCl ₂)	•			•		
Phosphine (PH ₃)	•			•		
Photoionization Detector (PID)				•		
Silane (SiH ₄)	•			•		
Sulfur Dioxide (SO ₂)	•			•		
VOC's		•		•		

Micro IV

Single-gas Detector



CH₃SH, Cl₂, ClO₂, CO, COCl₂, ETO, H₂, HCl, HCN, HF, H₂S, NH₃, NO, NO₂, O₂, O₃, PH₃, SiH₄, SO₂, THT

The Micro IV is compact, robust and very easy to use. It is designed to be used in the harshest environments. The Micro IV includes a set of rubber boots to withstand hard knocks and drops.

The Micro IV keeps gas detection simple. Most day-to-day functions are controlled with a single button, and calibration is fully automatic. The Micro IV delivers up to 3,000 hours of continuous operation from a single off the shelf AA alkaline battery.

The Micro IV carries a lifetime warranty on non-consumable components and two or more years of warranty on most sensors. Select sensors such as O₂, H₂S and CO carry a full three year warranty.

Standard Accessories:

- Micro IV detector
- Specified sensor
- Alkaline battery
- Rubber boot
- Manual

Value Kit Configuration:

- All standard accessories
- Calibration adapter
- Calibration gas
- Fixed flow regulator
- ABS carrying case

Optional Accessories:

- Sample draw pump
- Docking station
- Hand aspirated pump
- Data download station

Features:

- Highly configurable smart sensor design
- Full 3-year warranty on O₂, CO and H₂S sensors
- Event / Datalogging standard
- Programmable ceiling (3), STEL & TWA alarms
- AutoCal® automatic calibration

Instrument Pricing

3-Year Sensor Warranty

Part Number	Sensors	Resolution	Range	Price	
				Instrument Only	Value Kit add "K" to part number
1418-022	Oxygen (O ₂)	0.1% vol.	0 - 25% vol.	\$ 430.00	\$ 740.00
1418-027	Carbon monoxide (CO) Standard	1 ppm	0 - 300 ppm	\$ 430.00	\$ 740.00
1418-103	Carbon monoxide (CO-H) Reduced H ₂ sensitivity	1 ppm	0 - 300 ppm	\$ 430.00	\$ 740.00
1418-106	Carbon monoxide (CO-H) Reduced H ₂ sensitivity	1 ppm	0 - 500 ppm	\$ 430.00	\$ 740.00
1418-107	Carbon monoxide (CO)	1 ppm	0 - 1,000 ppm	\$ 430.00	\$ 740.00
1418-108	Carbon monoxide (CO)	1 ppm	0 - 2,000 ppm	\$ 430.00	\$ 740.00
1418-024	Hydrogen sulfide (H ₂ S) Standard	1 ppm	0 - 100 ppm	\$ 430.00	\$ 855.00
1418-111	Hydrogen sulfide (H ₂ S)	1 ppm	0 - 500 ppm	\$ 430.00	\$ 855.00

Micro IV Single-gas Detector



Instrument Pricing continued

2-Year Sensor Warranty

Part Number	Sensors	Resolution	Range	Price	
				Instrument Only	Value Kit add "K" to part number
1418-153	Chlorine (Cl ₂)	0.1 ppm	0 - 10.0 ppm	\$ 565.00	\$ 1,160.00
1418-118	Chlorine dioxide (ClO ₂)	0.01 ppm	0 - 2.00 ppm	\$ 840.00	-
1418-122	Ethylene oxide (C ₂ H ₄ O)	0.1 ppm	0 - 20.0 ppm	\$ 835.00	-
1418-130	Hydrogen (H ₂)	2 ppm	0 - 2,000 ppm	\$ 725.00	\$ 1,055.00
1418-131	Hydrogen (H ₂)	0.01%	0 - 1.00% vol.	\$ 760.00	\$ 1,090.00
1418-132	Hydrogen (H ₂)	0.01%	0 - 4.00% vol.	\$ 760.00	\$ 1,090.00
1418-120	Hydrogen cyanide (HCN)	0.5 ppm	0 - 50.0 ppm	\$ 590.00	\$ 1,205.00
1418-116	Nitrogen dioxide (NO ₂)	0.2 ppm	0 - 50.0 ppm	\$ 590.00	\$ 1,175.00
1418-115	Nitric oxide (NO)	1 ppm	0 - 100 ppm	\$ 610.00	-
1418-330	Phosphine (PH ₃)	0.05 ppm	0 - 10.00 ppm	\$ 620.00	-
1418-114	Sulfur dioxide (SO ₂)	0.05 ppm	0 - 10.00 ppm	\$ 560.00	\$ 1,005.00

1-Year Sensor Warranty

Part Number	Sensors	Resolution	Range	Price	
				Instrument Only	Value Kit add "K" to part number
1418-170	Ammonia (NH ₃)	1 ppm	0 - 200 ppm	\$ 665.00	\$ 1,250.00
1418-500	Ammonia (NH ₃)	5 ppm	0 - 500 ppm	\$ 665.00	\$ 1,250.00
1418-126	Hydrogen fluoride (HF)	0.1 ppm	0 - 10.0 ppm	\$ 865.00	\$ 1,230.00
1418-121	Hydrogen chloride (HCl)	0.2 ppm	0 - 30.0 ppm	\$ 865.00	\$ 1,230.00
1418-220	THT / Methyl mercaptan (CH ₃ SH)	0.1 ppm	0 - 25 ppm	\$ 1,165.00	-
1418-165	Ozone (O ₃)	0.01 ppm	0 - 1.00 ppm	\$ 865.00	-
1418-123	Silane (SiH ₄)	0.05 ppm	0 - 40.00 ppm	\$ 1,115.00	-
1418-168	Tetrahydrothiophene (THT)	0.1 mg/m ³	0 - 100 mg/m ³	\$ 1,165.00	-

6-Month Sensor Warranty

Part Number	Sensors	Resolution	Range	Price	
				Instrument Only	Value Kit add "K" to part number
1418-125	Phosgene (COCl ₂)	0.01 ppm	0 - 2.00 ppm	\$ 895.00	-

Docking Stations

Part Number	Description	Price
1419-204	DI220 Single Micro IV calibration and data download station (includes cable and software). Requires fixed flow regulator with on/off knob and tubing	\$ 600.00
1419-201	DS220 6-unit Micro IV docking station with power supply, PC interface cable and software. Requires Demand Flow Regulator and tubing	\$ 3,760.00

DI220
P/N 1419-204



DS220
P/N 1419-201

Micro IV

Single-gas Detector



Calibration Kits and Accessories

Part Number	Description	Price
7776-020	Calibration Kit. Includes carrying case, 0.5 lpm fixed flow regulator (34 L steel cylinders), calibration adapter and tubing	\$ 275.00
7776-025	Calibration Kit. Includes carrying case, 0.5 lpm fixed flow regulator for inside thread cylinders (Aluminum and 103 L steel cylinders), calibration adapter and tubing	\$ 275.00
7776-026	Calibration Kit. Includes carrying case, 1.0 lpm fixed flow regulator for reactive gases (Cl ₂ , ClO ₂ , ETO, HCl, HF, O ₃), calibration adapter and tubing	\$ 300.00
2603-020	Regulator, 0.5 lpm fixed flow with pressure gauge and on/off knob for cylinders with outside thread (34 L steel)	\$ 160.00
2603-025	Regulator, 0.5 lpm fixed flow with pressure gauge and on/off knob for cylinders with inside thread (aluminum and 103 L steel). Not for use with chlorine reactive gases (Cl ₂ , ClO ₂ , ETO, HCl, HF, O ₃)	\$ 160.00
2603-026	Regulator, 1.0 lpm fixed flow with pressure gauge and on/off knob for cylinders with inside thread (aluminum and 103 L steel). Required for use with reactive gases chlorine (Cl ₂ , ClO ₂ , ETO, HCl, HF, O ₃)	\$ 160.00
1419-216	Demand Flow Regulator for disposable cylinders with inside thread (aluminum and 103 L steel)	\$ 420.00
1419-217	Demand Flow Regulator for disposable cylinders with outside thread (34 L steel)	\$ 420.00
7770-201C	Calibration Adapter with tubing	\$ 55.00
7770-223	Calibration Adapter with tubing for non-reactive gases	\$ 15.00
1318214	Rubber Boot (top and bottom)	\$ 15.00
1418-EXT6	Extended 6-year sensor warranty (O ₂ , H ₂ S and CO)	\$ 110.00

Remote Sampling

Part Number	Description	Price
1318-911	Motorized Sample Draw Pump with tubing and wand	\$ 500.00
7711-004	Manual Hand Aspirator with tubing and wand	\$ 135.00

Replacement Sensors

3-Year Sensor Warranty

Part Number	Sensors	Resolution	Range	Price
1460231	Oxygen (O ₂)	0.1% vol.	0 - 25% vol.	\$ 165.00
1460232	Carbon monoxide (CO) - Standard	1 ppm	0 - 300 ppm	\$ 215.00
1460235	Carbon monoxide (CO)	1 ppm	0 - 1,000 ppm	\$ 215.00
1460018	Carbon monoxide (CO)	1 ppm	0 - 2,000 ppm	\$ 215.00
1460233	Carbon monoxide (CO-H) Reduced H ₂ sensitivity	1 ppm	0 - 300 ppm	\$ 215.00
1460261	Carbon monoxide (CO-H) Reduced H ₂ sensitivity	1 ppm	0 - 500 ppm	\$ 215.00
1318234	Carbon monoxide (CO+) Additionally warns of H ₂ S	1 ppm	0 - 300 ppm	\$ 215.00
1460236	Hydrogen sulfide (H ₂ S) - Standard	1 ppm	0 - 100 ppm	\$ 215.00
1460111	Hydrogen sulfide (H ₂ S)	1 ppm	0 - 500 ppm	\$ 215.00

Micro IV Single-gas Detector



Replacement Sensors continued

2-Year Sensor Warranty

Part Number	Sensors	Resolution	Range	Price
1318245	Chlorine (Cl ₂)	0.1 ppm	0 - 10 ppm	\$ 415.00
1318154	Chlorine dioxide (ClO ₂)	1 ppm	0 - 2.00 ppm	\$ 565.00
1460262	Ethylene oxide(ETO) (C ₂ H ₄ O)	0.1 ppm	0 - 20.0 ppm	\$ 585.00
1460258	Hydrogen (H ₂)	2 ppm	0 - 2,000 ppm	\$ 475.00
1460260	Hydrogen (H ₂)	0.01% vol.	0 - 1.00% vol.	\$ 510.00
1460259	Hydrogen (H ₂)	0.01% vol.	0 - 4.00% vol.	\$ 510.00
1460255	Hydrogen cyanide (HCN)	0.5 ppm	0 - 50.0 ppm	\$ 345.00
1460238	Nitrogen dioxide (NO ₂)	0.2 ppm	0 - 50.0 ppm	\$ 345.00
1460338	Nitrogen dioxide (NO ₂)	0.02 ppm	0 - 30.00 ppm	\$ 345.00
1460151	Nitric oxide (NO)	1 ppm	0 - 100 ppm	\$ 365.00
1460242	Phosphine (PH ₃)	0.05 ppm	0 - 10.00 ppm	\$ 375.00
1460150	Sulfur dioxide (SO ₂)	0.05 ppm	0 - 10.0 ppm	\$ 310.00

1-Year Sensor Warranty

Part Number	Sensors	Resolution	Range	Price
1460250	Ammonia (NH ₃)	1 ppm	0 - 200 ppm	\$ 415.00
1460500	Ammonia (NH ₃)	5 ppm	0 - 500 ppm	\$ 415.00
1460264	Hydrogen fluoride (HF)	0.1 ppm	0 - 10.0 ppm	\$ 620.00
1460249	Hydrogen chloride (HCl)	0.2 ppm	0 - 30.0 ppm	\$ 565.00
1460220	THT / Methyl Mercaptan (CH ₃ SH)	0.1 ppm	0 - 25 ppm	\$ 915.00
1318257	Ozone (O ₃)	0.01 ppm	0 - 1.00 ppm	\$ 565.00
1460243	Silane (SiH ₄)	0.05 ppm	0 - 40.00 ppm	\$ 840.00
1318168	Tetrahydrothiophene (THT)	0.1 mg/m ³	0 - 100 mg/m ³	\$ 915.00

6-Month Sensor Warranty

Part Number	Sensors	Resolution	Range	Price
1318248	Phosgene (COCl ₂)	0.01 ppm	0 - 2.00 ppm	\$ 620.00



GfG reserves the right to change part numbers, prices and/or technical information without notice. All rights reserved to correct typographical errors. All prices are listed in US dollars.

2017 Rev. 3 (04/06/17)



GfG Instrumentation

1194 Oak Valley Drive, Suite 20, Ann Arbor, MI 48108 USA
Phone: (734) 769-0573 • Toll Free (USA / Canada): (800) 959-0329
Website: www.goodforgas.com • info@gfg-inc.com
Worldwide Manufacturer of Gas Detection Solutions

G300

Portable Leak Detector



CH₄, NH₃, R12, R134a, R22



G300 shown with optional flexible helix cable

The G300 leak detector is the ideal instrument for accurate detection of gas leaks and dangerous gas concentrations. The G300 finds the smallest leaks on gas tubes and systems. It reacts to minimum concentrations of combustible gases (e.g. methane, natural gas) or toxic gases and vapors (e.g. ammonia). Different tone intervals indicate if the detector is getting closer or further from a leak. A bar graph continuously shows the gas concentration. In less than three seconds the detector reacts to explosive or toxic gases and vapors.

The leak detector consists of a basic detector and a long life chemosorption sensor. The accessories consist of a 30 cm flexible gooseneck and a 1 m flexible helix cable, which allows for measurement even in areas that are difficult to reach. The built-in battery allows for an operation time of more than eight hours.

Designed for one-handed operation, the G300 reacts to concentrations as small as 5 ppm and measures up to more than 10,000 ppm or 1% volume. The sensor is located at the end of a flexible gooseneck or a helix cable to allow the user to reach difficult or unreachable locations. The G311 operates on four "AA" alkaline batteries. All others have a rechargeable battery with run time of more than eight hours.

Standard Accessories:

- G300 detector
- Specified sensor
- Alkaline batteries or rechargeable NiMH battery pack as specified
- Charger (with rechargeable battery pack only)
- Fixed gooseneck (with alkaline battery pack only)
- Manual

Optional Accessories:

- Leather carrying case
- Helix cable
- Gooseneck

Features:

- Compact and lightweight
- Durable
- One-handed operation
- For combustible gases, ammonia (NH₃) and freons®
- Bar graph display for trend recognition
- More than 8 hours of continuous operation

Instrument Pricing

Leak Detectors for use in NON-hazardous locations only

Part Number	Description	Price
1316009	G311 for methane (natural gas), propane and other MOS detectable VOCs, with 4 AA alkaline batteries	\$ 550.00
1316-002	G313 for methane (natural gas), propane, Freons® and other MOS detectable VOCs, with NiMH rechargeable battery pack	\$ 880.00
1316-004	G315 for toxic gases, optimized for ammonia (NH ₃) with NiMH rechargeable battery pack	\$ 990.00

G300

Portable Leak Detector

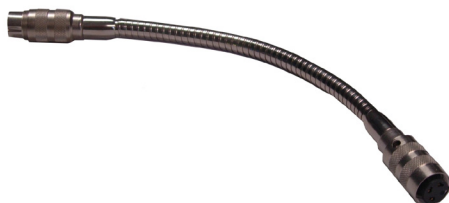


Remote Sampling

Part Number	Description	Price
1316235	Cable, flexible helix (1-3 feet)	\$ 140.00
1316231	Gooseneck (1 foot)	\$ 155.00

Accessories

Part Number	Description	Price
4001-300	115 VAC Charger for G300 Series detectors	\$ 60.00
1316213	Universal Charger, 115 V AC/50 Hz standard/trickle charge	\$ 310.00
1316212	Universal Vehicle Charger, 12/24 V DC standard/trickle charge	\$ 310.00
1316214	Charging Cable (for use with Universal Charger)	\$ 50.00
1316217	Vehicle Adapter with function LED	\$ 70.00
1316204	Leather Case with carrying strap	\$ 85.00



Gooseneck
P/N 1316231



G311
P/N 1316009

GfG reserves the right to change part numbers, prices and/or technical information without notice. All rights reserved to correct typographical errors. All prices are listed in US dollars.

2017 Rev. 2 (03/30/17)



GfG Instrumentation

1194 Oak Valley Drive, Suite 20, Ann Arbor, MI 48108 USA
Phone: (734) 769-0573 • Toll Free (USA / Canada): (800) 959-0329
Website: www.goodforgas.com • info@gfg-inc.com
Worldwide Manufacturer of Gas Detection Solutions

G450

Multi-gas Detector



CO, H₂S, LEL, O₂



Features:

- MSHA Approved G450 and Smart Pump are available in all 3 configurations (alkaline, rechargeable and flashlight rechargeable)
- Compact and robust 1 to 4 sensor design
- Interchangeable battery packs for up to 25 hours of continuous operation
- Three color back light for easy identification of alarm conditions
- Standard event and datalogging
- Bright, flashing LED alarm lights visible from 360°
- Optional built-in "flash light" LEDs
- Full 3-year warranty on all sensors*
- Highly water resistant (IP 67)
- Optional motorized smart pump operates in diffusion or sample-draw mode

The G450 Gas Detector offers exceptional performance for an extremely affordable price. The G450 four sensor multi-gas detector is compact, durable and very easy to use. The H₂S sensor offers 0.1 ppm resolution to comply with the latest TLV requirements. The G450 sensors are warranted for three full years, ensuring that the G450 has the lowest cost-of-ownership of any confined space gas detector on the market today. Replacement sensors carry the same three year warranty as the original sensors.

The G450 offers completely automatic calibration, one-button operation, top mounted display and interchangeable battery packs for up to 25 hours of continuous operation.

The optional motorized pump operates in diffusion and sample-draw modes, and can be easily attached or removed from the instrument when sampling needs change.

Standard Accessories:

- G450 detector
- Specified sensors
- Charger (if specified)
- Pump with 10 ft of tubing and probe (if specified)
- Calibration adapter
- Manual
- CD

Optional Accessories:

- Pump, 10 feet of tubing and probe
- Datalogging kit
- Docking station
- Test station
- Calibration gas, kits and regulators

Value Kit Configuration:

- All standard accessories
- Calibration gas
- Fixed flow regulator
- ABS carrying case
- Hand aspirated pump or motorized smart pump (if specified)

Confined Space Kit Configuration:

- All value kit accessories
- Rugged aluminum case (instead of ABS)
- Spare alkaline battery
- Hand aspirated pump or motorized smart pump (as specified)
- Data download cable and software
- Spare pump filters

* A vented O₂ sensor and unfiltered LEL sensor are available with a 2-year warranty

Instrument Pricing

Alkaline

Base Part Number**	Sensors*	Instrument and Kit Configuration		
		Instrument	Value Kit add "K" to part number	Confined Space Kit add "C" to part number
G450-10010	LEL	\$ 550.00	\$ 850.00	-
G450-11010	LEL, O ₂	\$ 600.00	\$ 900.00	-
G450-11110	LEL, O ₂ , CO	\$ 675.00	\$ 965.00	-
G450-11210	LEL, O ₂ , H ₂ S	\$ 675.00	\$ 1,035.00	-
G450-11410	LEL, O ₂ , CO, H ₂ S	\$ 730.00	\$ 1,100.00	-

* For sensor ranges and resolutions see Replacement Sensors.

** For MSHA Approved instrument, use G450M-XXXXX as Base Part Number and add \$100.00 to the price.

G450

Multi-gas Detector



Instrument Pricing continued

Rechargeable (Includes single charger)

Base Part Number**	Sensors*	Instrument and Kit Configuration		
		Instrument	Value Kit add "K" to part number	Confined Space Kit add "C" to part number
G450-10020	LEL	\$ 620.00	\$ 920.00	-
G450-11020	LEL, O ₂	\$ 670.00	\$ 970.00	\$ 1,100.00
G450-11120	LEL, O ₂ , CO	\$ 735.00	\$ 1,035.00	\$ 1,165.00
G450-11420	LEL, O ₂ , CO, H ₂ S	\$ 800.00	\$ 1,170.00	\$ 1,320.00

Flashlight Rechargeable (Includes single charger)

Base Part Number**	Sensors*	Instrument and Kit Configuration		
		Instrument	Value Kit add "K" to part number	Confined Space Kit add "C" to part number
G450-11040	LEL, O ₂	\$ 720.00	\$ 1,020.00	\$ 1,150.00
G450-11140	LEL, O ₂ , CO	\$ 785.00	\$ 1,085.00	\$ 1,215.00
G450-11440	LEL, O ₂ , CO, H ₂ S	\$ 850.00	\$ 1,220.00	\$ 1,370.00

* For sensor ranges and resolutions see Replacement Sensors.

** For MSHA Approved instrument, use G450M-XXXXX as Base Part Number and add \$100.00 to the price.

Instrument with Smart Pump

Alkaline with Alkaline Smart Pump

Base Part Number**	Sensors*	Instrument and Kit Configuration		
		Instrument	Value Kit add "K" to part number	Confined Space Kit add "C" to part number
G450-10014	LEL	\$ 850.00	\$ 1,150.00	-
G450-11014	LEL, O ₂	\$ 900.00	\$ 1,200.00	-
G450-11114	LEL, O ₂ , CO	\$ 965.00	\$ 1,265.00	-
G450-11214	LEL, O ₂ , H ₂ S	\$ 965.00	\$ 1,335.00	-
G450-11414	LEL, O ₂ , CO, H ₂ S	\$ 1,030.00	\$ 1,400.00	-

Rechargeable with Alkaline Smart Pump (Includes single charger)

Base Part Number**	Sensors*	Instrument and Kit Configuration		
		Instrument	Value Kit add "K" to part number	Confined Space Kit add "C" to part number
G450-11124	LEL, O ₂ , CO	\$ 1,035.00	\$ 1,335.00	\$ 1,465.00
G450-11424	LEL, O ₂ , CO, H ₂ S	\$ 1,100.00	\$ 1,470.00	\$ 1,620.00

* For sensor ranges and resolutions see Replacement Sensors.

** For MSHA Approved instrument with Smart Pump, use G450M-XXXXX as Base Part Number and add \$150.00 to the price.

G450

Multi-gas Detector



Instrument Pricing continued

Instrument with Smart Pump

Flashlight Rechargeable with Alkaline Smart Pump (Includes single charger)

Base Part Number**	Sensors*	Instrument and Kit Configuration		
		Instrument	Value Kit add "K" to part number	Confined Space Kit add "C" to part number
G450-11044	LEL, O ₂	\$ 1,020.00	\$ 1,320.00	\$ 1,450.00
G450-11444	LEL, O ₂ , CO, H ₂ S	\$ 1,150.00	\$ 1,520.00	\$ 1,670.00

Rechargeable with Rechargeable Smart Pump (Includes double charger)

Base Part Number**	Sensors*	Instrument and Kit Configuration		
		Instrument	Value Kit add "K" to part number	Confined Space Kit add "C" to part number
G450-10065	LEL	\$ 1,070.00	\$ 1,370.00	-
G450-11065	LEL, O ₂	\$ 1,120.00	\$ 1,420.00	\$ 1,550.00
G450-11165	LEL, O ₂ , CO	\$ 1,185.00	\$ 1,485.00	\$ 1,615.00
G450-11265	LEL, O ₂ , H ₂ S	\$ 1,185.00	\$ 1,555.00	\$ 1,705.00
G450-11465	LEL, O ₂ , CO, H ₂ S	\$ 1,250.00	\$ 1,620.00	\$ 1,770.00

Rechargeable with Flashlight Rechargeable Smart Pump (Includes double charger)

Base Part Number**	Sensors*	Instrument and Kit Configuration		
		Instrument	Value Kit add "K" to part number	Confined Space Kit add "C" to part number
G450-11166	LEL, O ₂ , CO	\$ 1,235.00	\$ 1,535.00	\$ 1,665.00
G450-11466	LEL, O ₂ , CO, H ₂ S	\$ 1,300.00	\$ 1,670.00	\$ 1,820.00

* For sensor ranges and resolutions see Replacement Sensors.

** For MSHA Approved instrument with Smart Pump, use G450M-XXXXX as Base Part Number and add \$150.00 to the price.



Rechargeable Battery Pack with Lights
P/N 1450-212

G450

Multi-gas Detector



Chargers and Batteries

Part Number	Description	Price
1450-202	Battery Pack, Alkaline (batteries not included) (Gray)	\$ 50.00
1450-211	Battery Pack, Rechargeable NiMH (Black)	\$ 95.00
1450-212	Battery Pack, Rechargeable NiMH with lights (Black)	\$ 145.00
1450220	Charging Cradle, Single	\$ 125.00
1450220P	Charging Cradle, Single (includes 110 V AC power supply)	\$ 145.00
1450220D	Charging Cradle, Double, for charging G450 and attached pump simultaneously	\$ 225.00
1450220DP	Charging Cradle, Double, for charging G450 and attached pump simultaneously (includes 110 V AC power supply)	\$ 245.00
1450220DP-F	Charging Cradle, Double, with cutout, for charging G450 and attached pump simultaneously (includes 110 V AC power supply)	\$ 265.00
1450-440P	Charging Cradle, Single, Vehicle (includes 12 V DC adapter)	\$ 190.00
1450-440DP	Charging Cradle, Double, Vehicle (includes 12 V DC adapter)	\$ 265.00
1450-500	Charging Cradle, 5-unit (includes 110 V AC power supply) (charge only)	\$ 845.00
1450-500D	Charging Cradle, Double (includes 110 V AC power supply) (charge only)	\$ 1,195.00
1450-300	Replacement Retaining Bracket for charging cradle	\$ 25.00
4001-650	Power Supply for Charger, 110 V AC (wall cube style)	\$ 30.00
4001-650V	Power Supply for Charger, 12 V DC (cigarette lighter style)	\$ 60.00
4003-450	Battery Hardware Kit, includes six spare screws and hex key	\$ 5.00

Note: All cradles include a retaining bracket.

Datalogging

Part Number	Description	Price
1450235R	Datalogging Kit for rechargeable G450 (includes cable and software)	\$ 125.00
1450235	Datalogging Kit for alkaline G450 (includes cradle, cable and software)	\$ 245.00
1650231	Datalogging Cable, USB Data Download Cable (requires charging cradle and software)	\$ 105.00
1450233	Datalogging Software	\$ 20.00
1419-450	5-Point G450 Downloading Station (includes USB cable and software)	\$ 2,995.00
1450-450	USB Cable for G450 Downloading Station	\$ 40.00
1450-455	Interconnect Cable for multiple G450 Downloading Stations	\$ 90.00

Downloading Station
(Laptop and instruments not included)
P/N 1419-450



Remote Sampling

Part Number	Description	Price
1450327	Adapter, Metal Pump inlet w/filter (requires cradle p/n 14500220DP-F)	\$ 75.00
1450-921	G400 Motorized Smart Pump – Alkaline [†]	\$ 300.00
1450-922	G400 Motorized Smart Pump – Rechargeable ^{††}	\$ 350.00
1450-924	G400 Motorized Smart Pump – Rechargeable w/LED ^{††}	\$ 400.00
7711-450	Manual Hand Aspirated Pump	\$ 95.00
1450-925	G400 Motorized Smart Pump – Alkaline [†] (MSHA Approved)	\$ 350.00
1450-926	G400 Motorized Smart Pump – Rechargeable ^{††} (MSHA Approved)	\$ 400.00
1450-927	G400 Motorized Smart Pump – Rechargeable w/LED ^{††} (MSHA Approved)	\$ 450.00

All pumps include
10' of tubing and
probe with filters

[†] Rechargeable pumps require G400 "new style" (P/N 1450220D) double charging cradle (blue tray) to charge instrument and pump simultaneously.

^{††} Smart pumps require instrument firmware version 3.31 or higher.

G450

Multi-gas Detector



Remote Sampling continued

Part Number	Description	Price
1000-205	Probe, Stainless Steel (CrNi), Telescopic (4½ feet) with filter and tube	\$ 190.00
1000-206	Probe, Stainless Steel (CrNi), Telescopic (6 feet) with filter and tube	\$ 210.00
1000214	Probe, Plastic with internally housed filters	\$ 75.00
7740-015	Replacement Filter Kit for Plastic Probe (2 hydrophobic filters & 8 particulate filter for p/n 1000214)	\$ 30.00
2609-068	Filters, Hydrophobic (25 replacements for p/n 1000214)	\$ 275.00
1450-321	Filters, pack of 10 for internal pump	\$ 75.00
804478	Pump inlet, plexiglass	\$ 3.00

Replacement Sensors

3-Year Sensor Warranty

Part Number	Sensors	Resolution	Range	Price
1450001	Oxygen (O ₂)	0.1% vol.	0 - 25% vol.	\$ 140.00
1450005	Combustible (LEL)	0.5% LEL	0 - 100% LEL	\$ 190.00
1450014	Carbon monoxide (CO-H) reduced H ₂ sensitivity	1 ppm	0 - 500 ppm	\$ 190.00
1450024	Carbon monoxide (CO-H) reduced H ₂ sensitivity	1 ppm	0 - 1,000 ppm	\$ 190.00
1450003	Hydrogen sulfide (H ₂ S)	0.1 ppm	0 - 100.0 ppm	\$ 190.00
1450002	COSH – Dual Channel	CO 1 ppm	0 - 500 ppm	\$ 290.00
		H ₂ S 0.5 ppm	0 - 100.0 ppm	
1450-1345	Sensor Pack (LEL**, O ₂ , CO, H ₂ S)	See above	See above	\$ 435.00

2-Year Sensor Warranty

Part Number	Sensors	Resolution	Range	Price
1450011	Oxygen (O ₂)	0.1% vol.	0 - 25% vol.	\$ 140.00
1450015	Combustible (LEL) - Unfiltered***	0.5% LEL	0 - 100% LEL	\$ 190.00

** Includes P/N 1450001 and P/N 1450005.

*** For use in the detection of large hydrocarbons.



Fixed Flow Regulator
P/N 2603-020

Calibration[†] Kits and Accessories

Part Number	Description	Price
7771-450	Calibration Adapter with tubing	\$ 25.00
7776-450	Calibration Kit [†] without gas	\$ 275.00
7745-016	Calibration Kit [†] with 3-way gas	\$ 360.00
7745-030	Calibration Kit [†] with 4-way gas	\$ 475.00

		Flow	Gauge	On/Off	Cylinders	
2603-020	Regulator, Fixed Flow	0.5 lpm	Yes	Yes	34 L Steel	\$ 160.00
2603-025	Regulator, Fixed Flow	0.5 lpm	Yes	Yes	103 L Steel & Aluminum	\$ 160.00

[†] All Calibration Kits include ABS carrying case, fixed flow regulator (as specified), calibration adapter and tubing.

[‡] Please refer to separate price list / section for additional calibration cylinders and gas types.

G450

Multi-gas Detector



Calibration Kits and Accessories continued

Part Number	Description	Price
9000-050	Carrying case, Aluminum with custom foam insert (Confined Space Kit)	\$ 165.00
9000-518	Carrying case, ABS with custom foam insert (Value Kit)	\$ 110.00
1450266	Protector case with carrying strap for instrument	\$ 75.00
1450269	Protector case with carrying strap for instrument with pump	\$ 100.00
943950	Crocodile belt clip (includes screw)	\$ 3.00
1450-224	Screen protectors, pack of 20	\$ 10.00
1450-EXT6	*Extended 6-year sensor warranty (LEL**, O ₂ , CO and H ₂ S)	\$ 285.00
1450-320	G450 Filter (pack of 4) with a gasket	\$ 15.00
1450-RFB-A	†G450 Factory refurbishment kit (includes 4 new sensors, housing front/back, filters, alligator clip and alkaline battery pack)	\$ 450.00
1450-RFB-R	†G450 Factory refurbishment kit (includes 4 new sensors, housing front/back, filters, alligator clip and rechargeable NiMH battery pack)	\$ 450.00
1450-RFB-F	†G450 Factory refurbishment kit (includes 4 new sensors, housing front/back, filters, alligator clip and rechargeable NiMH with lights battery pack)	\$ 450.00

* Please contact GfG for extended warranty on other sensor combinations.

** Includes P/N 1450001 and P/N 1450005.

† Sale of refurbishment kits are limited to authorized GfG distributors.



Protector Case
P/N 1450266



ABS Carrying Case
P/N 9000-518

G450 Configurator

Part Number Calculator

Prefix	Sensors			Options		
	Sensor 1	Sensor 2	Sensor 3/4	Battery	Pump	Kit
G450- or G450M-†						

† MSHA Approved G450

Sensors

Sensor 1 (cc)	Add
0 = Empty	\$ 0.00
1 = LEL**	\$ 50.00
2 = LEL (Unfiltered)*	\$ 50.00

* Two-year warranty

** % volume (MSHA)

Sensor 2	Add
0 = Empty	\$ 0.00
1 = O ₂ 3 yr (O2-A3)	\$ 50.00
2 = O ₂ 2 yr (4OX-V)*	\$ 50.00

* Two-year warranty

Sensor 3/4	Add
0 = Empty	\$ 0.00
1 = CO (500 ppm)	\$ 65.00
2 = H ₂ S (100 ppm)	\$ 65.00
4 = CO (500 ppm) and H ₂ S (100 ppm)	\$ 130.00
5 = CO-H (500 ppm)	\$ 65.00
6 = CO-H (500 ppm) and H ₂ S (100 ppm)	\$ 130.00
7 = CO-H (1,000 ppm)	\$ 65.00
8 = CO-H (1,000 ppm) and H ₂ S (100 ppm)	\$ 130.00

Options

Battery Options	Add
1 = Alkaline	\$ 0.00

Rechargeable battery and charger options

	Flash Light	Charger Type		12 V DC	Add
		Single	Double		
2 =		✓			\$ 70.00
3 =		✓		✓	\$ 115.00
4 =	✓	✓			\$ 120.00
5 =	✓	✓		✓	\$ 165.00
6 =			✓		\$ 170.00
7 =			✓	✓	\$ 215.00
8 =	✓		✓		\$ 220.00
9 =	✓		✓	✓	\$ 265.00

Pump Options	Add
0 = None	\$ 0.00

1 = Hand Aspirated	\$ 100.00
4 = Smart, Alkaline	\$ 300.00
5 = Smart, NiMH	\$ 350.00
6 = Smart, NiMH with flashlight	\$ 400.00
7 = Smart, Alkaline (MSHA)†	\$ 350.00
8 = Smart, NiMH (MSHA)†	\$ 400.00
9 = Smart, NiMH with flashlight (MSHA)†	\$ 450.00

† MSHA Approved G400-MP2 Smart Pump

The G400 smart pump communicates with the instrument and provides continuous display of pump status, including audible and visual alarm when flow is blocked.

Kit Options	Add
Leave blank = None	\$ 0.00

K = Value Kit	
without H ₂ S	\$ 300.00
with H ₂ S	\$ 370.00
C = Confined Space Kit	
without H ₂ S	\$ 430.00
with H ₂ S	\$ 520.00
S = Carrying Case	
with case	\$ 105.00

Price Calculator

Base (G450) or (G450M)†	Sensors			Options			Total
	Sensor 1	Sensor 2	Sensor 3/4	Battery	Pump	Kit	
\$500 or \$600†							\$

† MSHA Approved G450

GfG reserves the right to change part numbers, prices and/or technical information without notice. All rights reserved to correct typographical errors. All prices are listed in US dollars.

2017 Rev. 4 (03/29/17)



GfG Instrumentation

1194 Oak Valley Drive, Suite 20, Ann Arbor, MI 48108 USA
Phone: (734) 769-0573 • Toll Free (USA / Canada): (800) 959-0329
Website: www.goodforgas.com • info@gfg-inc.com
Worldwide Manufacturer of Gas Detection Solutions

G460

Multi-gas Detector



CH₃SH, C₂H₄O, Cl₂, ClO₂, CO, CO₂, COCl₂, Combustible (Catalytic), Combustible (Infrared), H₂, HCl, HCN, HF, H₂S, NH₃, NO, NO₂, O₂, O₃, PH₃, PID (VOC), SiH₄, SO₂, THT

The G460 is a rugged, compact instrument for simultaneous detection of up to six gases. The concussion proof housing, along with the highly dust and water resistant housing protects the instrument in the harshest environments. The G460 features completely automatic calibration, one-button operation, top mounted display and interchangeable battery packs for up to 24 hours of continuous operation. The rechargeable NiMH battery pack can even be equipped with optional "flash light" LEDs.

The G460 has a highly configurable smart sensor design and data logging / event logging are standard. There are a wide range of additional sensors available.

Options include a detachable, self-powered pump for sampling confined spaces prior to entry. It allows operation of the instrument in diffusion or sample-draw mode.

A full 3-year warranty is provided on most commonly used sensors (O₂, combustible, CO, H₂S and CO₂), which reduces the cost of ownership over the lifetime of the instrument. There is an optional 6-year warranty available at the time of purchase.

Features:

- Exceptional HAZMAT and Confined Space performance
- Up to 6 channels of detection, including...
- PID sensor for direct reading of toxic VOCs
- Infrared (NDIR) sensors for CO₂ and combustible gas (0% LEL - 100% volume)
- Full 3-year warranty on O₂, Combustible, CO, H₂S and CO₂ sensors*
- Highly configurable smart sensor design
- Full featured, compact and rugged design

* O₂ sensor and unfiltered LEL sensors available with optional 2-year warranty

Standard Accessories:

- G460 detector
- Specified sensors
- Charger (if specified)
- Pump with 10 ft of tubing and probe (if specified)
- Calibration adapter
- Manual

Optional Accessories:

- Motorized pump, operable in diffusion or sample draw mode
- Datalogging kit
- Docking station
- Test station
- Calibration gas, kits and regulators

Value Kit Configuration:

- All standard accessories
- Calibration gas
- Fixed flow regulator
- ABS carrying case
- Hand aspirated pump or motorized smart pump (if specified)

Confined Space Kit Configuration:

- All value kit accessories
- Rugged aluminum case (instead of ABS)
- Spare alkaline battery
- Hand aspirated pump or motorized smart pump (as specified)
- Data download cable and software

G460

Multi-gas Detector



Instrument Pricing

Common Standard Sensor Configurations

Base Part Number	Sensors*	Instrument Battery Type		
		Alkaline add "10" to part number	NiMH add "20" to part number	NiMH w/ Flashlights add "40" to part number
G460-11 01 02 00	O ₂ , cc LEL [†] , CO, H ₂ S	\$ 1,045.00	\$ 1,165.00	\$ 1,215.00
G460-11 03 00 00	O ₂ , cc LEL [†] , COSH [‡]	\$ 1,020.00	\$ 1,140.00	\$ 1,190.00
G460-11 03 12 00	O ₂ , cc LEL [†] , COSH [‡] , Cl ₂	\$ 1,270.00	\$ 1,390.00	\$ 1,440.00
G460-11 03 20 00	O ₂ , cc LEL [†] , COSH [‡] , HCN	\$ 1,270.00	\$ 1,390.00	\$ 1,440.00
G460-11 03 16 00	O ₂ , cc LEL [†] , COSH [‡] , NH ₃	\$ 1,320.00	\$ 1,440.00	\$ 1,490.00
G460-11 03 22 00	O ₂ , cc LEL [†] , COSH [‡] , PH ₃	\$ 1,270.00	\$ 1,390.00	\$ 1,440.00
G460-11 03 24 00	O ₂ , cc LEL [†] , COSH [‡] , NO ₂	\$ 1,270.00	\$ 1,390.00	\$ 1,440.00
G460-11 03 10 00	O ₂ , cc LEL [†] , COSH [‡] , SO ₂	\$ 1,220.00	\$ 1,340.00	\$ 1,390.00
G460-11 10 16 00	O ₂ , cc LEL [†] , SO ₂ , NH ₃	\$ 1,345.00	\$ 1,465.00	\$ 1,515.00

Common PID (0-2,000) Equipped Sensor Configurations

Base Part Number	Sensors*	Instrument Battery Type		
		Alkaline add "10" to part number	NiMH add "20" to part number	NiMH w/ Flashlights add "40" to part number
G460-11 01 70 00	O ₂ , cc LEL [†] , CO, PID	\$ 2,195.00	\$ 2,315.00	\$ 2,365.00
G460-11 03 70 00	O ₂ , cc LEL [†] , COSH [‡] , PID	\$ 2,270.00	\$ 2,390.00	\$ 2,440.00

Common NDIR (IR LEL[†] / CO₂) Equipped Sensor Configurations

Base Part Number	Sensors*	Instrument Battery Type		
		Alkaline add "10" to part number	NiMH add "20" to part number	NiMH w/ Flashlights add "40" to part number
G460-11 01 02 60	O ₂ , cc LEL [†] , CO, H ₂ S, CO ₂	\$ 2,245.00	\$ 2,365.00	\$ 2,415.00
G460-01 01 02 61	O ₂ , IR LEL [†] , CO, H ₂ S	\$ 2,145.00	\$ 2,265.00	\$ 2,315.00
G460-01 03 00 64	O ₂ , IR LEL [†] , COSH [‡] , CO ₂	\$ 2,420.00	\$ 2,540.00	\$ 2,590.00

Common PID (0-2,000) and NDIR (IR LEL[†] / CO₂) Equipped Sensor Configurations

Base Part Number	Sensors*	Instrument Battery Type		
		Alkaline add "10" to part number	NiMH add "20" to part number	NiMH w/ Flashlights add "40" to part number
G460-11 03 70 61	O ₂ , IR LEL [†] , COSH [‡] , PID, cc LEL [†]	\$ 3,370.00	\$ 3,490.00	\$ 3,540.00
G460-11 03 70 64	O ₂ , IR LEL/% vol. [†] , COSH [‡] , PID, CO ₂ , cc LEL [†]	\$ 3,670.00	\$ 3,790.00	\$ 3,840.00

[†] cc LEL = Catalytic Combustion LEL Sensor (traditional); IR LEL = Infrared LEL Sensor.

[‡] COSH is a combination CO and H₂S sensor providing discrete readouts for each channel.

* For sensor ranges and resolutions see Replacement Sensors.

For configurations not listed in the table, please use the G460 Configurator.

All configurations on this page are for instruments with the specified sensors and battery options only.

G460

Multi-gas Detector



Instrument Pricing continued

G460 w/ Alkaline Smart Pump

Common Standard Sensor Configuration

Base Part Number	Sensors*	Instrument Battery Type		
		Alkaline add "14" to part number	NiMH add "24" to part number	NiMH w/ Flashlights add "44" to part number
G460-11 01 02 00	O ₂ , cc LEL [†] , CO, H ₂ S	\$ 1,345.00	\$ 1,465.00	\$ 1,515.00
G460-11 03 00 00	O ₂ , cc LEL [†] , COSH [‡]	\$ 1,320.00	\$ 1,440.00	\$ 1,490.00
G460-11 03 12 00	O ₂ , cc LEL [†] , COSH [‡] , Cl ₂	\$ 1,570.00	\$ 1,690.00	\$ 1,740.00
G460-11 03 20 00	O ₂ , cc LEL [†] , COSH [‡] , HCN	\$ 1,570.00	\$ 1,690.00	\$ 1,740.00
G460-11 03 16 00	O ₂ , cc LEL [†] , COSH [‡] , NH ₃	\$ 1,620.00	\$ 1,740.00	\$ 1,790.00
G460-11 03 22 00	O ₂ , cc LEL [†] , COSH [‡] , PH ₃	\$ 1,570.00	\$ 1,690.00	\$ 1,740.00
G460-11 03 24 00	O ₂ , cc LEL [†] , COSH [‡] , NO ₂	\$ 1,570.00	\$ 1,690.00	\$ 1,740.00
G460-11 03 10 00	O ₂ , cc LEL [†] , COSH [‡] , SO ₂	\$ 1,520.00	\$ 1,640.00	\$ 1,690.00
G460-11 02 10 00	O ₂ , cc LEL [†] , H ₂ S, SO ₂	\$ 1,445.00	\$ 1,565.00	\$ 1,615.00
G460-11 10 16 00	O ₂ , cc LEL [†] , SO ₂ , NH ₃	\$ 1,645.00	\$ 1,765.00	\$ 1,815.00

Common PID (0-2,000) Equipped Sensor Configurations

Base Part Number	Sensors*	Instrument Battery Type		
		Alkaline add "14" to part number	NiMH add "24" to part number	NiMH w/ Flashlights add "44" to part number
G460-11 01 70 00	O ₂ , cc LEL [†] , CO, PID	\$ 2,495.00	\$ 2,615.00	\$ 2,665.00
G460-11 02 70 00	O ₂ , cc LEL [†] , H ₂ S, PID	\$ 2,495.00	\$ 2,615.00	\$ 2,665.00
G460-11 03 70 00	O ₂ , cc LEL [†] , COSH [‡] , PID	\$ 2,570.00	\$ 2,690.00	\$ 2,740.00

Common NDIR (IR LEL[†] / CO₂) Equipped Sensor Configurations

Base Part Number	Sensors*	Instrument Battery Type		
		Alkaline add "14" to part number	NiMH add "24" to part number	NiMH w/ Flashlights add "44" to part number
G460-11 01 02 60	O ₂ , cc LEL [†] , CO, H ₂ S, CO ₂	\$ 2,545.00	\$ 2,665.00	\$ 2,715.00
G460-01 03 00 64	O ₂ , IR LEL [†] , COSH [‡] , CO ₂	\$ 2,720.00	\$ 2,840.00	\$ 2,890.00
G460-01 01 02 64	O ₂ , IR LEL [†] , CO, H ₂ S, CO ₂	\$ 2,745.00	\$ 2,865.00	\$ 2,915.00
G460-01 03 10 64	O ₂ , IR LEL [†] , COSH [‡] , SO ₂ , CO ₂	\$ 2,720.00	\$ 2,840.00	\$ 2,890.00

Common PID (0-2,000) and NDIR (IR LEL[†] / CO₂) Equipped Sensor Configurations

Base Part Number	Sensors*	Instrument Battery Type		
		Alkaline add "14" to part number	NiMH add "24" to part number	NiMH w/ Flashlights add "44" to part number
G460-01 03 70 64	O ₂ , IR LEL [†] , COSH [‡] , PID, CO ₂	\$ 3,970.00	\$ 4,090.00	\$ 4,140.00

[†] cc LEL = Catalytic Combustion LEL Sensor (traditional); IR LEL = Infrared LEL Sensor.

[‡] COSH is a combination CO and H₂S sensor providing discrete readouts for each channel.

* For sensor ranges and resolutions see Replacement Sensors.

For configurations not listed in the table, please use the G460 Configurator.

All configurations on this page are for instruments with the specified sensors, battery options and a motorized smart pump with alkaline battery pack.

All configurations include a double charger to charge the instrument and the pump simultaneously.

G460

Multi-gas Detector



Instrument Pricing continued

G460 w/ NiMH Smart Pump

Common Standard Sensor Configurations

Base Part Number	Sensors*	Instrument Battery Type	
		NiMH add "65" to part number	NiMH w/ Flashlights add "66" to part number
G460-11 01 02 00	O ₂ , cc LEL [†] , CO, H ₂ S	\$ 1,615.00	\$ 1,665.00
G460-11 03 00 00	O ₂ , cc LEL [†] , COSH [‡]	\$ 1,590.00	\$ 1,640.00
G460-11 03 12 00	O ₂ , cc LEL [†] , COSH [‡] , Cl ₂	\$ 1,840.00	\$ 1,890.00
G460-11 03 20 00	O ₂ , cc LEL [†] , COSH [‡] , HCN	\$ 1,840.00	\$ 1,890.00
G460-11 03 22 00	O ₂ , cc LEL [†] , COSH [‡] , PH ₃	\$ 1,840.00	\$ 1,890.00
G460-11 03 24 00	O ₂ , cc LEL [†] , COSH [‡] , NO ₂	\$ 1,840.00	\$ 1,890.00
G460-11 03 10 00	O ₂ , cc LEL [†] , COSH [‡] , SO ₂	\$ 1,790.00	\$ 1,840.00
G460-11 02 10 00	O ₂ , cc LEL [†] , H ₂ S, SO ₂	\$ 1,715.00	\$ 1,765.00

Common PID (0-2,000) Equipped Sensor Configurations

Base Part Number	Sensors*	Instrument Battery Type	
		NiMH add "65" to part number	NiMH w/ Flashlights add "66" to part number
G460-11 01 70 00	O ₂ , cc LEL [†] , CO, PID	\$ 2,765.00	\$ 2,815.00
G460-11 02 70 00	O ₂ , cc LEL [†] , H ₂ S, PID	\$ 2,765.00	\$ 2,815.00
G460-11 03 70 00	O ₂ , cc LEL [†] , COSH [‡] , PID	\$ 2,840.00	\$ 2,890.00

Common NDIR (IR LEL[†] / CO₂) Equipped Sensor Configurations

Base Part Number	Sensors*	Instrument Battery Type	
		NiMH add "65" to part number	NiMH w/ Flashlights add "66" to part number
G460-01 03 00 64	O ₂ , IR LEL [†] , COSH [‡] , CO ₂	\$ 2,990.00	\$ 3,040.00

Common PID (0-2,000) and NDIR (IR LEL[†] / CO₂) Equipped Sensor Configurations

Base Part Number	Sensors*	Instrument Battery Type	
		NiMH add "65" to part number	NiMH w/ Flashlights add "66" to part number
G460-01 03 70 64	O ₂ , IR LEL [†] , COSH [‡] , PID, CO ₂	\$ 4,240.00	\$ 4,290.00

[†] cc LEL = Catalytic Combustion LEL Sensor (traditional); IR LEL = Infrared LEL Sensor.

[‡] COSH is a combination CO and H₂S sensor providing discrete readouts for each channel.

* For sensor ranges and resolutions see Replacement Sensors.

For configurations not listed in the table, please use the G460 Configurator.

All configurations on this page are for instruments with the specified sensors, rechargeable battery options and a motorized smart pump with rechargeable battery pack. All configurations include a double charger to charge the instrument and the pump simultaneously.

Rechargeable (NiMH) instrument configurations include a single charger.

G460

Multi-gas Detector



Instrument Pricing continued

Select Kit Configurations

Common Standard Sensor Kit Configurations

Base Part Number	Sensors*	Value Kit add "K" to part number	Confined Space Kit add "C" to part number
G460-11 03 20 00 65	O ₂ , cc LEL †, COSH‡, HCN	\$ 2,530.00	\$ 2,680.00
G460-11 03 10 00 65	O ₂ , cc LEL †, COSH‡, SO ₂	\$ 2,340.00	\$ 2,490.00

Common PID (0-2,000) Equipped Kit Configurations

Base Part Number	Sensors*	Value Kit add "K" to part number	Confined Space Kit add "C" to part number
G460-11 03 70 00 65	O ₂ , cc LEL †, COSH‡, PID	\$ 3,295.00	\$ 3,445.00

Common PID (0-2,000) and NDIR (IR LEL[†] / CO₂) Equipped Kit Configurations

Base Part Number	Sensors*	Value Kit add "K" to part number	Confined Space Kit add "C" to part number
G460-01 03 70 61 65	O ₂ , cc LEL †, COSH‡, PID	\$ 4,395.00	\$ 4,545.00

† cc LEL = Catalytic Combustion LEL Sensor (traditional); IR LEL = Infrared LEL Sensor.

‡ COSH is a combination CO and H₂S sensor providing discrete readouts for each channel.

* For sensor ranges and resolutions see Replacement Sensors.

All configurations on the above three Select Kit Configurations are for instruments with the specified sensors, rechargeable battery pack and a motorized smart pump with rechargeable battery packs. All configurations include a double charger to charge the instrument and the pump simultaneously and the components specified for the kit type.

Additional configurations are available upon request.



Double Charging Cradle
For charging the G450 or G460 with attached pump
P/N 1450220D



G400 MP-2 Motorized Smart Pump
Available in alkaline, rechargeable or rechargeable with LED flashlight
P/N 1450-922



G460

Multi-gas Detector



Chargers and Batteries

Part Number	Description	Price
1450-202	Battery Pack, Alkaline (batteries not included) (Gray)	\$ 50.00
1450-211	Battery Pack, Rechargeable NiMH (Black)	\$ 95.00
1450-212	Battery Pack, Rechargeable NiMH with lights (Black)	\$ 145.00
1450220	Charging Cradle, Single	\$ 125.00
1450220P	Charging Cradle, Single (includes 110 V AC power supply)	\$ 145.00
1450220D	Charging Cradle, Double, for charging G460 and attached pump simultaneously	\$ 225.00
1450220DP	Charging Cradle, Double, for charging G460 and attached pump simultaneously (includes 110 V AC power supply)	\$ 245.00
1450220DP-F	Charging Cradle, Double, with cutout, for charging G460 and attached pump simultaneously (includes 110 V AC power supply)	\$ 265.00
1450-440P	Vehicle Charging Cradle, Single (includes 12 V DC adapter)	\$ 190.00
1450-440DP	Vehicle Charging Cradle, Double (includes 12 V DC adapter)	\$ 265.00
1450-500	Charging Cradle, 5-unit (includes 110 V AC power supply)(charge only)	\$ 845.00
1450-500D	Charging Cradle, Double (includes 110 V AC power supply)(charge only)	\$ 1,195.00
1450-300	Replacement Retaining Bracket	\$ 25.00
4001-650	Power Supply for Charger, 110 V AC (wall cube style)	\$ 30.00
4001-650V	Power Supply for Charger, 12 V DC (cigarette lighter style)	\$ 60.00
4003-450	Battery Hardware Kit, includes six spare screws and hex key	\$ 5.00

Note: All cradles include a retaining bracket.

Datalogging

Part Number	Description	Price
1450235R	Datalogging Kit for rechargeable G460 (includes cable and software)	\$ 125.00
1450235	Datalogging Kit for alkaline G460 (includes charging cradle, cable and software)	\$ 245.00
3005-MSDC	Memory card (2 GB) for data storage	\$ 25.00
1650231	Cable, USB Data Download (requires charging cradle and software)	\$ 105.00
1450233	Datalogging Software	\$ 20.00

Remote Sampling

Part Number	Description		Price
1450327	Adapter, Metal Pump inlet w/filter (requires cradle p/n 1450220DP-F)		\$ 75.00
1450-921	G400 Motorized Smart Pump – Alkaline [†]	All pumps include 10' of tubing and probe with filters	\$ 300.00
1450-922	G400 Motorized Smart Pump – Rechargeable ^{††}		\$ 350.00
1450-924	G400 Motorized Smart Pump – Rechargeable w/LED ^{††}		\$ 400.00
7711-450	Manual Hand Aspirated Pump		\$ 95.00
1000-205	Probe, Stainless Steel (CrNi), Telescopic (4½ feet) with filter and tube		\$ 190.00
1000-206	Probe, Stainless Steel (CrNi), Telescopic (6 feet) with filter and tube		\$ 210.00
1000214	Probe, Plastic with internally housed filters		\$ 75.00
7740-015	Replacement Filter Kit for Plastic Probe (2 hydrophobic filters and 8 particulate filter for p/n 1000214)		\$ 30.00
2609-068	Filters, Hydrophobic (25 replacements for p/n 1000214)		\$ 275.00
1450-321	Filters, pack of 10 for internal pump		\$ 75.00
804478	Pump inlet, plexiglass		\$ 3.00

[†] Rechargeable pumps require G400 “new style” (P/N 1450220D) double charging cradle (blue tray) to charge instrument and pump simultaneously.

^{††} Smart pumps require instrument firmware version 3.31 or higher.

G460

Multi-gas Detector



Calibration[†] Kits and Accessories

Part Number	Description						Price
7771-450	Calibration Adapter with tubing						\$ 25.00
7776-450	Calibration Kit [‡] without gas						\$ 275.00
7745-016	Calibration Kit [‡] with 3-way gas (O ₂ , CO, CH ₄)				Includes 0.5 lpm regulator. Not for use with HCl or Cl ₂ .	\$ 360.00	
7745-030	Calibration Kit [‡] with 4-way gas (O ₂ , CO, CH ₄ and H ₂ S)					\$ 475.00	
7745-031	Calibration Kit [‡] with 4-way and Isobutylene gas					\$ 555.00	
7745-032	Calibration Kit [‡] with 5-way gas (O ₂ , CO, CH ₄ , H ₂ S and CO ₂)					\$ 505.00	
7745-041	Calibration Kit [‡] with 5-way gas (SO ₂)					\$ 755.00	
7776-461	Calibration Kit [‡] without gas			Includes 1 lpm regulator. For use with HCl and Cl ₂ .		\$ 275.00	
7745-030C	Calibration Kit [‡] with 4-way gas					\$ 475.00	
		Flow	Gauge	On/Off	Cylinders	HCl/Cl ₂	
2603-020	Regulator, Fixed Flow	0.5 lpm	Yes	Yes	34 L Steel	No	\$ 160.00
2603-025	Regulator, Fixed Flow	0.5 lpm	Yes	Yes	103 L Steel & Aluminum	No	\$ 160.00
2603-026	Regulator, Fixed Flow	1 lpm	Yes	Yes		Yes	\$ 160.00
9000-050	Carrying case, Aluminum with custom foam insert (Confined Space Kit)						\$ 165.00
9000-518	Carrying case, ABS with custom foam insert (Value Kit)						\$ 110.00
1450266	Protector case with carrying strap for instrument						\$ 75.00
1450269	Protector case with carrying strap for instrument with pump						\$ 100.00
943950	Crocodile belt clip (includes screw)						\$ 3.00
1450-224	Screen protectors, pack of 20						\$ 10.00
2803-026	PID sensor cap						\$ 20.00
2803-048	PID spacer						\$ 20.00
2601-008	PID top filter, Teflon, large (1µm)						\$ 25.00
2601-009	PID bottom filter, Teflon cloth (10µm)						\$ 7.00
7740-016	PID dry lamp cleaning kit (includes polishing disc)						\$ 25.00
7740-026	PID maintenance kit (includes polishing disc, Teflon filter, cotton filter and padded swab)						\$ 90.00
5500-001	Cell, PID Ionization (electrode stack)						\$ 90.00
1460-EXT6	*Extended 6-year sensor warranty (LEL, O ₂ , CO and H ₂ S)						\$ 400.00
1463-EXT6	*Extended 6-year sensor warranty (LEL, O ₂ and COSH)						\$ 350.00
1460-320	G460 Filter (pack of 6) with a gasket						\$ 20.00

[‡] All Calibration Kits include ABS carrying case, fixed flow regulator (as specified), calibration adapter and tubing.

[†] Please refer to separate price list/section for additional calibration cylinders and gas types.

* Please contact GfG for extended warranty on other sensor combinations.

Protector Case shown does not include instrument
P/N 1450266



G460

Multi-gas Detector



Replacement Sensors

5-Year Sensor Warranty

Part Number	Sensors	Resolution	Range	Price
1460231C	Oxygen (O ₂) (4OX-LL)	0.1% vol.	0 - 25% vol.	\$ 275.00

3-Year Sensor Warranty

Part Number	Sensors	Resolution	Range	Price
1460231	Oxygen (O ₂)	0.1% vol.	0 - 25% vol.	\$ 165.00
1460710	Combustible (LEL)	0.5% LEL	0 - 100% LEL	\$ 225.00
1460232	Carbon monoxide (CO)	1 ppm	0 - 300 ppm	\$ 215.00
1460235	Carbon monoxide (CO)	1 ppm	0 - 1,000 ppm	\$ 215.00
1460018	Carbon monoxide (CO)	1 ppm	0 - 2,000 ppm	\$ 215.00
1460233	Carbon monoxide (CO-H) reduced H ₂ sensitivity	1 ppm	0 - 300 ppm	\$ 215.00
1460261	Carbon monoxide (CO-H) reduced H ₂ sensitivity	1 ppm	0 - 500 ppm	\$ 215.00
1460236	Hydrogen sulfide (H ₂ S) - Standard	0.1 ppm	0 - 100.0 ppm	\$ 215.00
1460111	Hydrogen sulfide (H ₂ S)	1 ppm	0 - 500 ppm	\$ 215.00
1650730	COSH – Dual Channel	CO 1 ppm H ₂ S 0.5 ppm	0 - 500 ppm 0 - 100.0 ppm	\$ 315.00
1460-1345	Sensor Pack (LEL, O ₂ , and COSH)	See above	See above	\$ 525.00

3-Year Sensor Warranty NDIR (Infrared)

Part Number	Sensors	Resolution	Range	Price
1460780	Carbon dioxide (CO ₂)	0.01% vol.	0 - 5% vol.	\$ 1,200.00
1460782	Carbon dioxide (CO ₂)	0.01% vol.	0 - 25% vol.	\$ 1,200.00
1460770	Combustible (LEL)	0.2% LEL	0 - 100% LEL	\$ 1,200.00
1460772	Combustible (% vol.)	0.01% vol.	0 - 100% vol.	\$ 1,200.00
1460773	Combustible (LEL & % vol.)	Same as above (CO ₂ = 0 - 5% vol.)		\$ 1,200.00
1460774	CO ₂ and Combustible (LEL)			\$ 1,700.00
1460778	CO ₂ and Combustible (LEL & % vol.)			\$ 1,700.00



G460

Multi-gas Detector



Replacement Sensors continued

2-Year Sensor Warranty

Part Number	Sensors	Resolution	Range	Price	
1460231B	Oxygen (O ₂)	0.1% vol.	0 - 25% vol.	\$	150.00
1460720	Combustible (LEL) - Unfiltered**	0.5% LEL	0 - 100% LEL	\$	225.00
1460245	Chlorine (Cl ₂)	0.1 ppm	0 - 10.0 ppm	\$	365.00
1460154	Chlorine dioxide (ClO ₂)	0.01 ppm	0 - 2.00 ppm	\$	565.00
1460262	Ethylene oxide (ETO) (C ₂ H ₄ O)	0.1 ppm	0 - 20.0 ppm	\$	585.00
1460258	Hydrogen (H ₂)	2 ppm	0 - 2,000 ppm	\$	475.00
1460260	Hydrogen (H ₂)	0.01% vol.	0 - 1.00% vol	\$	510.00
1460259	Hydrogen (H ₂) - Standard	0.01% vol.	0 - 4.00% vol	\$	510.00
1460255	Hydrogen cyanide (HCN)	0.5 ppm	0 - 50.0 ppm	\$	345.00
1460238	Nitrogen dioxide (NO ₂)	0.2 ppm	0 - 50.0 ppm	\$	345.00
1460338	Nitrogen dioxide (NO ₂)	0.02 ppm	0 - 30.00 ppm	\$	345.00
1460151	Nitric oxide (NO)	1 ppm	0 - 100 ppm	\$	365.00
1460242	Phosphine (PH ₃)	0.05 ppm	0 - 10.00 ppm	\$	375.00
1460150	Sulfur dioxide (SO ₂)	0.05 ppm	0 - 10.00 ppm	\$	310.00
1460703	Photo Ionization (PID)*	0.1 ppm	0 - 500.0 ppm	\$	1,375.00
1460704	Photo Ionization (PID)*	0.5 ppm	0 - 2,000 ppm	\$	1,375.00
1460706	Photo Ionization (PID)*	5 ppm	0 - 10,000 ppm	\$	1,375.00
5500-002	PID 10.6eV replacement lamp assembly for the above 3 sensors*			\$	300.00

1-Year Sensor Warranty

Part Number	Sensors	Resolution	Range	Price	
1460250	Ammonia (NH ₃)	1 ppm	0 - 200 ppm	\$	415.00
1460500	Ammonia (NH ₃)	5 ppm	0 - 500 ppm	\$	415.00
1460264	Hydrogen fluoride (HF)	0.1 ppm	0 - 10.0 ppm	\$	620.00
1460249	Hydrogen chloride (HCl)	0.2 ppm	0 - 30.0 ppm	\$	565.00
1460220	THT / Methyl mercaptan (CH ₃ SH)	0.1 ppm	0 - 25 ppm	\$	915.00
1460257	Ozone (O ₃)	0.01 ppm	0 - 1.00 ppm	\$	565.00
1460243	Silane (SiH ₄)	0.1 ppm	0 - 40.0 ppm	\$	840.00
1318168	Tetrahydrothiophene (THT)	0.1 mg/m3	0 - 100 mg/m ³	\$	915.00

6-Month Sensor Warranty

Part Number	Sensors	Resolution	Range	Price	
1460248	Phosgene (COCl ₂)	0.01 ppm	0 - 2.00 ppm	\$	620.00

* PID sensor electronics warranty is for the lifetime of the sensor. The PID 10.6eV replacement lamp warranty is for 2 years.

** For use in the detection of large hydrocarbons.

G460 Configurator

Part Number Calculator

Prefix	Sensors							Options	
	Sensor 1	Sensor 2	Sensor 3	Sensor 4	Sensor 5			Battery	Pump
G460-									

Sensors

Sensor 1 (cc)	Add
0 = Empty	\$ 0.00
1 = LEL	\$ 100.00
2 = LEL (Unfiltered)*	\$ 100.00

* Two-year warranty.

Sensor 2	Add
0 = Empty	\$ 0.00
1 = O ₂ 3 yr (O2-A3)	\$ 100.00
B = O ₂ 2 yr (4OX-V)**	\$ 100.00
C = O ₂ 5 yr (4OX-LL)	\$ 200.00
A = Toxic**	-

** All toxic sensors are available for Sensor 2 except COSH and PID.

Options

Battery Options					Add
1 =	Alkaline				\$ 0.00
Rechargeable battery and charger options:					
	Flash Light	Charger Type		12 V DC	Add
		Single	Double		
2 =		✓			\$ 120.00
3 =		✓		✓	\$ 165.00
4 =	✓	✓			\$ 170.00
5 =	✓	✓		✓	\$ 215.00
6 =			✓		\$ 220.00
7 =			✓	✓	\$ 265.00
8 =	✓		✓		\$ 270.00
9 =	✓		✓	✓	\$ 315.00

Sensor	3†	4†	Add
Empty	00	-	\$ 0.00
CO (300)†	01	01	\$ 100.00
H ₂ S (100)†	02	02	\$ 100.00
COSH	03	-	\$ 175.00
CO-H (300)†	04	04	\$ 100.00
H ₂ S (500)	05	05	\$ 100.00
SO ₂ (10)	10	10	\$ 200.00
Cl ₂ (10)	12	12	\$ 250.00
ClO ₂ (2)	14	14	\$ 450.00
NH ₃ (200)	16	16	\$ 300.00
NH ₃ (500)	18	18	\$ 300.00
HCN (50)	20	20	\$ 250.00
HCl (30)	21	21	\$ 450.00
PH ₃ (10)	22	22	\$ 250.00
NO (100)	23	23	\$ 250.00
NO ₂ (50)	24	24	\$ 250.00
C ₂ H ₄ O (ETO) (20)	26	26	\$ 450.00
HF (10)	27	27	\$ 500.00
O ₃ (1)	28	28	\$ 450.00
H ₂ (2,000)	29	29	\$ 350.00
CO (1,000)	31	31	\$ 100.00
H ₂ (4% vol.)†	32	32	\$ 350.00
CO-H (1,000)	33	33	\$ 100.00
CO (500)	34	34	\$ 100.00
SiH ₄	35	35	\$ 750.00
H ₂ (0-1% vol.)	36	36	\$ 350.00
THT (100 mg/m ³)	37	37	\$ 800.00
CO-H (500)	38	38	\$ 100.00
COCl ₂ (2)	39	39	\$ 500.00
THT (25)	40	40	\$ 800.00
NO ₂ (30)	41	41	\$ 250.00
PID* (2,000)	-	70	\$ 1,250.00
PID* (500)	-	71	\$ 1,250.00
PID* (0-10,000)	-	73	\$ 1,250.00

Sensor 5 (NDIR)				Add
	CO ₂	LEL	% Vol	
00 =	-	-	-	\$ 0.00
60 =	0-5%†	-	-	\$ 1,200.00
61 =	-	0-100%	-	\$ 1,200.00
63 =	-	0-100%	0-100%	\$ 1,200.00
64 =	0-5%†	0-100%	-	\$ 1,700.00
66 =	0-5%†	0-100%	0-100%	\$ 1,700.00
67 =	0-25%	-	-	\$ 1,200.00

† Standard version.

Pump Options	Add
0 = None	\$ 0.00
1 = Hand Aspirated	\$ 100.00
4 = Smart, Alkaline	\$ 300.00
5 = Smart, NiMH	\$ 350.00
6 = Smart, NiMH with flashlight	\$ 400.00

The G400 smart pump communicates with the instrument and provides continuous display of pump status, including audible and visual alarm when flow is blocked.

Key for chart to the left:

† Standard version.

† Select sensors 3 & 4 in numeric order. Leave sensor empty if only one sensor is selected.

Please contact GfG for range, sensors or gases that are not listed.

Price Calculator

Base (G460)	Sensors					Options		Total
	Sensor 1	Sensor 2	Sensor 3	Sensor 4	Sensor 5	Battery	Pump	
\$645								\$

GfG reserves the right to change part numbers, prices and/or technical information without notice. All rights reserved to correct typographical errors. All prices are listed in US dollars.

2017 Rev. 3 (04/06/17)



GfG Instrumentation

1194 Oak Valley Drive, Suite 20, Ann Arbor, MI 48108 USA
 Phone: (734) 769-0573 • Toll Free (USA / Canada): (800) 959-0329 25
 Website: www.goodforgas.com • info@gfg-inc.com
 Worldwide Manufacturer of Gas Detection Solutions

DS400/DS404 and TS400 Docking Stations and Test Station



DS400
Docking Station



TS400
Test Station

The operation of the DS400 or the DS404 (Multi-inlet) docking station couldn't be any easier. Simply put the G450 or the G460 in the dock and the system will take over from there. The docking station automatically performs a full functional test including fresh air calibration, bump test, extensive sensor tests, alarm tests and performs an automatic AutoCal[®] calibration.

The DS404 four-inlet docking station has four test gas ports, eliminating the need to switch between gases. It also can be cascaded with multiple docking stations.

After all tests have been completed the docking station will automatically start the charging process of the detector or you may remove and begin using it.

The DS400 software includes a module to quickly print official calibration or bump test certificates.

The TS400 test station is designed to reduce the cost of ownership every step of the way. The push button regulator helps to sharply reduce the amount of gas required to test your instruments.

Standard Accessories:

- Data software
- USB computer interface cable
- Power supply (TS400 requires charging option)
- Configuration software
- Download software
- Certificate generator
- Manual
- 2 GB SD memory card

Optional Accessories:

- Demand flow regulator
- 12 V DC vehicle power adapter

Please note: Operation of the DS400 requires a demand flow regulator, the DS404 requires a demand flow regulator per cylinder of gas and the TS400 requires a push button regulator.

Features:

- Fully automatic functional bump test and calibration (TS400 performs bump test only)
- Automatic alarm testing
- Automatic charging
- Automatic record keeping
- Simple pass / fail indication
- Up to 2,000,000 records in memory
- Prints official calibration (DS400/DS404) or bump test certificates
- Economical use of gas for a lower cost of ownership

Specific Features:

- Ability to cascade multiple docking stations
- Four test gas ports on the DS404 docking station
- No computer necessary for the docking stations
- Daily bump testing is simple with the TS400
- Bump test records can be stored for easy retrieval and report generation
- Test stations are economical and simple to use

DS400 Instrument Service Report

Date	Time	Operator	Unit	Serial No.	Ver	Test	Sensor	Test	Zero	Gas	Result
2008-04-14	11:28	20080500	2.50	12345678	3.11	CAL	CO	200PPM	PASS	PASS	
						CAL	O ₂	200PPM	PASS	PASS	
						CAL	O ₂	100%LEL	PASS	PASS	
						CAL	LEL	50%LEL	PASS	PASS	
							Audio	Alarm	PASS	PASS	
							Visual	Alarm	PASS	PASS	
2008-04-14	15:25	20080500	2.50	12345678	3.11	CAL	CO	200PPM	PASS	PASS	
						CAL	O ₂	200PPM	PASS	PASS	
						CAL	O ₂	100%LEL	PASS	PASS	
						CAL	LEL	50%LEL	PASS	PASS	
							Audio	Alarm	PASS	PASS	
							Visual	Alarm	PASS	PASS	
2008-04-14	15:14	20080500	2.50	9999	3.14	CAL	CO	200PPM	PASS	PASS	
						CAL	O ₂	200PPM	PASS	PASS	

Calibration Certificate

G450

Serial Number: 12345678

Version: 3.11

Sensor	Unit	Alarm 1	Alarm 2	Alarm 3	STEL	TWA	Test	Zero	Gas	Test Results
CO	PPM	10	20	30	10	15	20	PASS	PASS	
O ₂	PPM	25	200	0	200	25	200	PASS	PASS	
O ₂	%VOL%	19.5	17	23.5	0	0	19	PASS	PASS	
LEL	%LEL	10	20	60	0	0	50	PASS	PASS	

Audible Alarm: PASS

Visual Alarm: PASS

Calibration performed by
GFC DS400 Docking Station

Xyz, Inc. Service

S/N: 00000000

Version: 2.00

Technician

Date: 2008-04-14

Time: 11:25

Critic

DS400/DS404 and TS400 Docking Stations and Test Station



Docking Stations

Part Number	Description	Price
1450-401	*DS400 Docking Station – Single cradle	\$ 1,595.00
1450-402	*DS400 Docking Station – Double cradle (Instrument & Pump)	\$ 1,695.00
1450-401R	DS400 Docking Station – Single cradle w/ demand flow regulator	\$ 1,995.00
1450-402R	DS400 Docking Station – Double cradle (Instrument & Pump) w/ demand flow regulator	\$ 2,095.00

* Operation will require the use of a demand flow regulator.

Four Inlet Docking Stations

Part Number	Description	Price
1450-404	*DS404 Four Inlet Multi-gas Docking Station – Single cradle	\$ 2,695.00
1450-405	*DS404 Four Inlet Multi-gas Docking Station – Double cradle (Instrument & Pump)	\$ 2,795.00
1450-404R1	**DS404 Four Inlet Multi-gas Docking Station – Single cradle w/ 1 regulator	\$ 3,095.00
1450-404R2	**DS404 Four Inlet Multi-gas Docking Station – Single cradle w/ 2 regulators	\$ 3,495.00
1450-404R3	**DS404 Four Inlet Multi-gas Docking Station – Single cradle w/ 3 regulators	\$ 3,895.00
1450-404R4	**DS404 Four Inlet Multi-gas Docking Station – Single cradle w/ 4 regulators	\$ 4,295.00
1450-405R1	**DS404 Four Inlet Multi-gas Docking Station – Double cradle (Instrument & Pump) w/ 1 regulator	\$ 3,195.00
1450-405R2	**DS404 Four Inlet Multi-gas Docking Station – Double cradle (Instrument & Pump) w/ 2 regulators	\$ 3,595.00
1450-405R3	**DS404 Four Inlet Multi-gas Docking Station – Double cradle (Instrument & Pump) w/ 3 regulators	\$ 3,995.00
1450-405R4	**DS404 Four Inlet Multi-gas Docking Station – Double cradle (Instrument & Pump) w/ 4 regulators	\$ 4,395.00

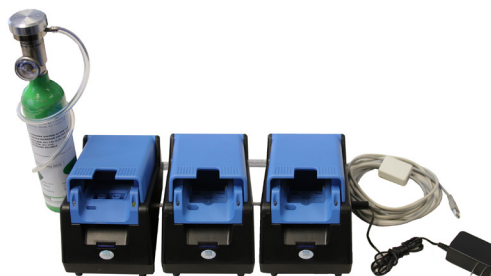
* Operation will require the use of a demand flow regulator per cylinder of gas.

** Includes regulators for aluminum cylinders, P/N 1419-216.

Multi-unit Docking Station Systems

Part Number	Description	Price
1450-401-3X	3 unit DS401 Docking Station system, all stations w/single gas inlet, single cradle, base plate, unit-to-unit power adapters, Ethernet cables & standard accessories	\$ 5,085.00
1450-402-3X	3 unit DS402 Docking Station system, all stations w/single gas inlet, double cradle, base plate, unit-to-unit power adapters, Ethernet cables & standard accessories	\$ 5,385.00
1450-401R-3X	3 unit DS401 Docking Station system, all stations w/single gas inlet, single cradle, base plate, unit-to-unit power adapters, Ethernet cables, standard accessories & one demand flow regulator (DFR)	\$ 5,485.00
1450-402R-3X	3 unit DS402 Docking Station system, all stations w/single gas inlet, double cradle, base plate, unit-to-unit power adapters, Ethernet cables, standard accessories & one demand flow regulator (DFR)	\$ 5,785.00
1450-404-3X	3 unit DS404 Docking Station system, all stations w/four gas inlets, single cradle, base plate, unit-to-unit power adapters, Ethernet cables & standard accessories	\$ 8,385.00
1450-405-3X	3 unit DS405 Docking Station system, all stations w/four gas inlets, double cradle, base plate, unit-to-unit power adapters, Ethernet cables & standard accessories	\$ 8,685.00

Two unit docking station systems and other combinations are available.



DS400/DS404 and TS400 Docking Stations and Test Station



Test Stations

Part Number	Description		Price
1450-601	*TS400 Test Station – Single cradle	Includes tubing, software, USB cable and manual	\$ 750.00
1450-602	*TS400 Test Station – Double cradle (Instrument & Pump)		\$ 900.00
1450-611	*TS400 Test Station with charging – Single cradle		\$ 950.00
1450-612	*TS400 Test Station with charging – Double cradle (Instrument & Pump)		\$ 1,000.00

* Operation will require the use of a push button regulator.

Accessories

Part Number	Description	Price
804765	CO ₂ Absorption filter for DS400 and DS404 Docking Station	\$ 100.00
1450195	Cradle, Single for DS400 and DS404 Docking Station	\$ 150.00
1450196	Cradle, Double (Instrument & Pump) for DS400 and DS404 Docking Station	\$ 300.00
1450196-F	Cradle, Double (Instrument & Pump w/inlet) for DS400 and DS404 Docking Station	\$ 320.00
1450231	USB cable, 9 foot length, for DS400 and DS404 Docking Station	\$ 125.00
1450600	USB cable, 6 foot length, mini 5 pin for TS400 Test Station	\$ 20.00
1450-300	Replacement Retaining Bracket (for TS400 or charging cradle)	\$ 25.00
2103-015	Double Power Adapter Connector (1/4") for DS400 and DS404 Docking Station	\$ 10.00
4003-401	Cable, 12" RS485 Interconnect Link for DS400 and DS404 Docking Station	\$ 7.50
3005-404	Software CD for DS400 and DS404 Docking Station	\$ 5.00
3005-400	Software CD for TS400 Test Station	\$ 5.00
4001-650D	Power Supply, 110V for DS400 and DS404 Docking Station	\$ 30.00
4001-650DV	Vehicle Power Supply for DS400 and DS404 Docking Station	\$ 60.00

		Flow	Gauge	On/Off	Cylinders	HCl/Cl ₂	
2603-400	Regulator, Push button, for TS400 - with inside thread	0.5 lpm	Yes	Yes	Aluminum	No	\$ 160.00
1419-216	Regulator, Demand Flow - with inside thread C-10 connection	3 lpm max	Yes	No	Aluminum	No	\$ 420.00
1419-217	Regulator, Demand Flow - disposable cylinders with outside thread CGA600	3 lpm max	Yes	No	34 L Steel	No	\$ 420.00



Double Power Adapter Connector
P/N 2103-015



Vehicle Power Supply
P/N 4001-650DV



Interconnect Link Cable
P/N 4003-401

GfG reserves the right to change part numbers, prices and/or technical information without notice. All rights reserved to correct typographical errors. All prices are listed in US dollars.

2017 Rev. 2 (03/30/17)



GfG Instrumentation

1194 Oak Valley Drive, Suite 20, Ann Arbor, MI 48108 USA
Phone: (734) 769-0573 • Toll Free (USA / Canada): (800) 959-0329
Website: www.goodforgas.com • info@gfg-inc.com
Worldwide Manufacturer of Gas Detection Solutions

RAM 744

Respiratory Airline Monitor



CO



Portable Filter Panel
P/N 9050-744



RAM 744
P/N 744



Wall Mount Filter Panel
P/N 8050-744

The RAM 744 is the ideal monitor for portable applications and where space is limited. It is mounted with the filtration system, allowing for rapid response and eliminating the possibility of sample lines becoming blocked or crimped.

All GfG Instrumentation RAM instruments satisfy the requirements of OSHA rule 29 CFR 1910.134 (d) (2) (ii) for carbon monoxide monitoring. They will also monitor Grade E air, generally specified for breathing air in cylinders (SCBA).

The compact, portable "air case" encloses the three-stage 25, 50 or 100 CFM filter panel with the RAM 744 CO monitor in a rugged carrying case. All models have quick-connect inlets and outlets.

Any GfG Instrumentation RAM instrument can be custom-configured to meet the needs of the end user's exact specifications.

Standard Accessories:

- RAM 744
- Standard electrochemical carbon monoxide (CO) sensor
- Optional low hydrogen interference CO sensor (add "-H" to part number)
- Manual

Features:

- Continuous inline carbon monoxide (CO) monitor
- Low maintenance, dependable, long-life electrochemical sensor
- Meets OSHA requirements for grade D breathing air
- AutoCal® automatic calibration
- Three-stage filtering option for up to 8 users

Instruments and Filter Panels*

Instrument only

Base Part Number	Description	Price	
		Standard CO sensor	Low H ₂ interference CO sensor add "-H" to part number
744	RAM instrument with standard (0 - 99 ppm) CO sensor (to be used with approved filter panel)	\$ 965.00	\$ 1,065.00
744-XP	RAM instrument with standard (0 - 99 ppm) CO sensor with power pack in watertight suitcase	\$ 1,410.00	\$ 1,510.00

Instruments with Complete Filter Panel

Base Part Number	Description	Price	
		Standard CO sensor	Low H ₂ interference CO sensor add "-H" to part number
8025-744	25 CFM wall mount filter panel, maximum of 2 ports*	\$ 1,990.00	\$ 2,090.00
8050-744	50 CFM wall mount filter panel, maximum of 4 ports*	\$ 2,190.00	\$ 2,290.00
8100-744	100 CFM wall mount filter panel, maximum of 8 ports*	\$ 2,715.00	\$ 2,815.00
9025-744	25 CFM portable filter panel, maximum of 2 ports*	\$ 2,115.00	\$ 2,215.00
9050-744	50 CFM portable filter panel, maximum of 4 ports*	\$ 2,450.00	\$ 2,550.00
9100-744	100 CFM portable filter panel, maximum of 8 ports*	\$ 3,365.00	\$ 3,465.00

* RAM 744 instruments and panels may be optionally equipped with a low hydrogen interference (CO-H) carbon monoxide sensor.

RAM 744

Respiratory Airline Monitor



Replacement Sensors

Part Number	Sensors	Resolution	Range	Price
1450004	Carbon monoxide (CO) for monitor with serial numbers $\geq 09080100^*$	1 ppm	0 - 99 ppm	\$ 270.00
1450014A	Carbon monoxide with reduced hydrogen interference (CO-H)	1 ppm	0 - 99 ppm	\$ 270.00

* Serial number <09080100 will require a factory refurb and the purchase of a new sensor.

Calibration Kits and Accessories

Part Number	Description	Concentration(s)	Size	Balance	Cylinder	Price
7802-013	Calibration gas, Carbon monoxide (CO)	10 ppm	34 L	Air	Steel	\$ 75.00
7802-006	Calibration gas, Zero gas (O ₂) (impurity free air)	20.9%	34 L	N ₂	Steel	\$ 75.00
7735-101	Calibration Kit with carrying case, regulator, calibration adapter, test gas cylinders (zero air and carbon monoxide) and tubing					\$ 350.00
2603-020	Regulator, 0.5 lpm fixed flow with pressure gauge and on/off knob for cylinders with outside thread (34 L steel)					\$ 160.00
2603-010	Regulator, 0.5 lpm fixed flow with on/off knob and guage for cylinders with outside thread (34 L steel)					\$ 110.00
4001-027A	Power adapter, 110 V AC					\$ 70.00
7740-744	Calibration adapter					\$ 10.00
7701-744	Calibration connector with tubing and regulator					\$ 95.00
1301-002	Remote horn, 110 V AC					\$ 270.00
1301-001	Remote horn, 12 V DC					\$ 205.00
1301-744	Remote horn/strobe with 25 feet of cable (for portable units only)					\$ 210.00
2609-25P	Filter kit for 8025 and 9025					\$ 205.00
2609-50P	Filter kit for 8050 and 9050					\$ 215.00
2609-100P	Filter kit for 8100 and 9100					\$ 215.00



(with Power Pack)

Portable Compressed Air Monitor
P/N 744-XP

GfG reserves the right to change part numbers, prices and/or technical information without notice. All rights reserved to correct typographical errors. All prices are listed in US dollars.

2017 Rev. 2 (04/03/17)



GfG Instrumentation

1194 Oak Valley Drive, Suite 20, Ann Arbor, MI 48108 USA
Phone: (734) 769-0573 • Toll Free (USA / Canada): (800) 959-0329
Website: www.goodforgas.com • info@gfg-inc.com
Worldwide Manufacturer of Gas Detection Solutions

RAM 4021

Respiratory Airline Monitor



CO, Dew Point, O₂



The RAM 4021 AutoCal® series is the unit of choice where specific and accurate measurement of carbon monoxide, oxygen or dew-point levels are required. Our innovative AutoCal® system makes calibration and maintenance simple. Additional features include alarm relay contacts, user adjustable alarm points, and low flow alarm indicator. All models may be purchased with or without airline filter systems.

The 25, 50 and 100 CFM wall mounted filter panels remove dangerous contaminants from supplied air sources and ensure clean, breathable air. The three-stage filter system efficiently removes particulates, oil vapors and hydrocarbons from an air supply. After filtration, the regulator sets the pressure for the respiratory equipment, and the manifold assembly provides multiple outlets for airline hose quick connections.

All GfG Instrumentation RAM Instruments satisfy the requirements of OSHA rule 29 CFR 1910.134 (d) (2) (ii) for carbon monoxide monitoring. They will also monitor Grade E air, generally specified for breathing air in cylinders (SCBA).

Features:

- Continuous carbon monoxide (CO) monitor for compressed air
- Optional low hydrogen interference CO sensor (add "-H" to part number)
- Robust, easy to operate design
- Integrated dew point measurement (if specified)
- Meets OSHA monitoring requirements for grade D breathing air
- AutoCal® automatic calibration
- Available in CE marked models
- Dryer control relays (DPX model only)
- User-adjustable alarm points
- Dry contacts for remote horn and lights
- Internal, case-mounted horn
- LCD display
- NEMA 4X housing
- Optional three-stage filtering for up to 8 users

Standard Accessories:

- RAM 4021 Monitor
- Standard carbon monoxide (CO) or optional low H₂ interference (CO-H) sensor
- Other sensors (as specified)
- Manual

Standard Instruments*

Base Part Number	Description	Price	
		Standard CO sensor	Low H ₂ interference CO sensor add "-H" to part number
4021	Carbon monoxide (CO) monitor	\$ 1,595.00	\$ 1,695.00
4021-1	Carbon monoxide (CO) and oxygen (O ₂) monitor	\$ 1,760.00	\$ 1,860.00
4021-O	Oxygen (O ₂) monitor	\$ 1,660.00	N/A
4021-AR	Carbon monoxide (CO) monitor with alarm reset	\$ 1,650.00	\$ 1,750.00
4021-DP	Dew point monitor	\$ 2,725.00	N/A
4021-DP-PR	Dew point monitor with power relay. Complies with NFPA 99 C-26 (5.1.3.5-15)	\$ 2,825.00	\$ 2,925.00
4021-DPX	Carbon monoxide (CO) and dew point monitor for medical breathing air applications with dryer control relays	\$ 3,025.00	\$ 3,125.00
4021-DPX-PR	Carbon monoxide (CO) and dew point monitor with power relay. Complies with NFPA 99 C-26 (5.1.3.5-15)	\$ 3,125.00	\$ 3,225.00
4021-DPX-PR-420	Carbon monoxide (CO) and dew point monitor with power relay 4-20 mA output. Complies NFPA 99 C-26 (5.1.3.5-15)	\$ 3,225.00	\$ 3,325.00
4021-PR	Carbon monoxide (CO) monitor with power relay Complies NFPA 99 C-26 (5.1.3.5-15)	\$ 1,700.00	\$ 1,800.00
4021-TS	Carbon monoxide (CO) monitor with toggle switch (for audible alarm)	\$ 1,700.00	\$ 1,800.00
9025-XPS	Portable filter panel / 25 CFM with 4021-1 (2 ports)	\$ 3,550.00	\$ 3,650.00

* For sensor ranges and resolutions see Replacement Sensors. Additional configurations are available upon request.

RAM 4021

Respiratory Airline Monitor



CE Marked RAM 4021 Instruments

Base Part Number	Description	Price	
		Standard CO sensor	Low H ₂ interference CO sensor add "-H" to part number
4021-CE	Carbon monoxide (CO) monitor with CE mark	\$ 1,945.00	\$ 2,045.00
4021-1-CE	Carbon monoxide (CO) and O ₂ monitor with CE mark	\$ 2,110.00	\$ 2,210.00
4021-AR-CE	Carbon monoxide monitor w alarm reset and CE mark	\$ 2,000.00	\$ 2,100.00
4021-PR-CE	Carbon monoxide monitor with power relay and CE mark. Complies with NFPA 99 C-26 (5.1.3.5-15)	\$ 2,050.00	\$ 2,150.00
4021-TS-CE	Carbon monoxide monitor with toggle switch (for audible alarm) and CE mark	\$ 2,050.00	\$ 2,150.00
9025-XPS-CE	Portable filter panel / 25 CFM with 4021-1-CE (2 ports) with CE mark	\$ 3,900.00	\$ 4,000.00

Note: CE marked version conforms with all pertinent EEC directives. For sensor ranges and resolutions see Replacement Sensors.

Filter Panels (Without Instrument)*

Part Number	Description	Price
8025	25 CFM wall mount filter panel, maximum of 2 ports*	\$ 1,100.00
8050	50 CFM wall mount filter panel, maximum of 4 ports*	\$ 1,500.00
8100	100 CFM wall mount filter panel, maximum of 8 ports*	\$ 2,500.00

* RAM 4021 instruments are typically wall-mounted adjacent to the filter panel. The 4021 instrument can also be custom mounted together with the filter panel on the same mounting plate. Consult factory for pricing and availability.

Instruments with Complete Filter Panels

Part Number	Description	Price
8025-4021	Wall mount filter panel / 25 CFM with 4021 (2 ports)	\$ 2,845.00
8050-4021	Wall mount filter panel / 50 CFM with 4021 (4 ports)	\$ 3,190.00
8100-4021	Wall mount filter panel / 100 CFM with 4021 (8 ports)	\$ 3,790.00

Replacement Sensors

Part Number	Sensors	Resolution	Range	Price
5701-011	Oxygen (O ₂)	0.1% vol.	0 - 25% vol.	\$ 165.00
5503-020	Carbon monoxide (CO)	1 ppm	0 - 100 ppm	\$ 270.00
1450014A	Carbon monoxide with reduced hydrogen interference (CO-H)**	1 ppm	0 - 100 ppm	\$ 270.00
5503-035	High Dew Point (special order only)	1 °F	10 - 70 °F	\$ 700.00
5503-034	Low Dew Point (special order only)	1 °F	-40 - 15 °F	\$ 300.00
1702-DPX	Dew Point sensor for medical breathing air	1 °F	-112 - 68 °F	\$ 1,150.00
5503-048	4100-DP Dew Point sensor	1 °C	-80 - 20 °C	\$ 1,150.00

** P/N 1450014A CO-H replacement sensor is only for the RAM 4021 Low H₂ interference instruments (see previous page); part numbers ending in "-H".



Portable Filter Panel
P/N 9025-XPS



RAM 4021

Respiratory Airline Monitor



Calibration Kits and Accessories

Part Number	Description	Concentration(s)	Size	Balance	Cylinder	Price
7802-013	Calibration gas, Carbon monoxide (CO)	10 ppm	34 L	Air	Steel	\$ 75.00
7802-001	Calibration gas, Carbon monoxide (CO)	20 ppm	34 L	Air	Steel	\$ 75.00
7802-002	Calibration gas, Carbon monoxide (CO)	50 ppm	34 L	Air	Steel	\$ 75.00
7802-020	Calibration gas, Nitrogen (N ₂)	99.99% vol.	34 L	N/A	Steel	\$ 75.00
7802-006	Calibration gas, Zero gas (O ₂) (impurity free air)	20.9%	34 L	N ₂	Steel	\$ 75.00
7750-001	Calibration Kit with carrying case, regulator, calibration adapter, test gas cylinder and tubing					\$ 310.00
7750-005	Calibration Kit with CO and zero gas, carrying case, regulator, calibration adapter and tubing					\$ 385.00
7750-004	Regulator, 0.4 lpm fixed flow with on/off knob and gauge for cylinders with outside thread (34 L steel)					\$ 110.00
2608-004	Inlet regulator with filter					\$ 115.00
2608-001	Inlet regulator with filter and gauge					\$ 130.00
2605-002	High pressure inlet regulator (5,000 psi)					\$ 220.00
2605-014	Inlet regulator for dew point monitors					\$ 80.00
7750-003	Calibration Adapter with tubing and regulator					\$ 130.00
1301-002	Remote Horn, 110 V AC					\$ 270.00
1301-001	Remote Horn, 12 V DC					\$ 205.00
2609-015	Replacement filter element for regulator					\$ 20.00
2609-25P	Filter Kit for 8025					\$ 205.00
2609-50P	Filter Kit for 8050					\$ 215.00
2609-100P	Filter Kit for 8100					\$ 215.00
2610-001	Humidifier					\$ 95.00
9000-4021	Field Service Kit (includes 2 tubing assemblies, 2 pressure switches and flow meter)					\$ 200.00
2604-133	Calibration port					\$ 10.00



Custom 8100-4021 Filter panel with
100 CFM 8 outlet manifold

GfG reserves the right to change part numbers, prices and/or technical information without notice. All rights reserved to correct typographical errors. All prices are listed in US dollars.

2017 Rev. 3 (04/12/17)



GfG Instrumentation
1194 Oak Valley Drive, Suite 20, Ann Arbor, MI 48108 USA
Phone: (734) 769-0573 • Toll Free (USA / Canada): (800) 959-0329
Website: www.goodforgas.com • info@gfg-inc.com
Worldwide Manufacturer of Gas Detection Solutions

Calibration Gas Pricing

For Portable Instruments and Respiratory Air Monitors



Calibration Gas

Part Number	Gas	Concentration(s)	Size*	Balance	Cylinder*	Price
7802-031	Ammonia (NH ₃)	100 ppm	34 L	Air	Aluminum	\$ 320.00
7803-001	Ammonia (NH ₃)	100 ppm	58 L	Air	Aluminum	\$ 320.00
7802-032	Carbon dioxide (CO ₂)	4% vol	34 L	N ₂	Steel	\$ 75.00
7802-040	Carbon dioxide (CO ₂)	25% vol.	34 L	N ₂	Steel	\$ 75.00
7802-042	Carbon dioxide (CO ₂)	4% vol	34 L	N ₂	Aluminum	\$ 200.00
7802-013	Carbon monoxide (CO)	10 ppm	34 L	Air	Steel	\$ 75.00
7802-001	Carbon monoxide (CO)	20 ppm	34 L	Air	Steel	\$ 75.00
7802-004	Carbon monoxide (CO)	200 ppm	34 L	Air	Steel	\$ 75.00
7802-029	Chlorine (Cl ₂)**	10 ppm	34 L	N ₂	Aluminum	\$ 320.00
7802-115	Ethylene (C ₂ H ₄)	50% LEL	34 L	Air	Steel	\$ 75.00
7802-159	Ethylene oxide (ETO) (C ₂ H ₄ O)**	10 ppm	34 L	N ₂	Aluminum	\$ 420.00
7802-047	Hexane (C ₆ H ₁₄)	50% LEL	34 L	Air	Steel	\$ 75.00
7802-036	Hydrogen (H ₂)	2,000 ppm	34 L	Air	Steel	\$ 75.00
7802-021	Hydrogen (H ₂)	50% LEL	34 L	Air	Steel	\$ 75.00
7802-048	Hydrogen (H ₂)	50% LEL	34 L	Air	Aluminum	\$ 200.00
7802-025	Hydrogen (H ₂)	99.9% vol.	34 L	Air	Steel	\$ 75.00
7803-024	Hydrogen chloride (HCl)**	10 ppm	58 L	N ₂	Aluminum	\$ 420.00
7802-009	Hydrogen chloride (HCl)**	10 ppm	34 L	N ₂	Aluminum	\$ 320.00
7803-003	Hydrogen cyanide (HCN)	20 ppm	58 L	N ₂	Aluminum	\$ 320.00
7802-022	Hydrogen sulfide (H ₂ S)	20 ppm	34 L	N ₂	Aluminum	\$ 150.00
7802-024	Isobutylene (C ₄ H ₈)	100 ppm	34 L	Air	Steel	\$ 75.00
7802-224	Isobutylene (C ₄ H ₈)	200 ppm	34 L	Air	Steel	\$ 75.00
7802-044	Isobutylene (C ₄ H ₈)	100 ppm	34 L	Air	Aluminum	\$ 75.00
7802-019	Methane (CH ₄)	99.9% vol.	34 L	N ₂	Steel	\$ 75.00
7802-011	Methane (CH ₄)	50% LEL	34 L	Air	Steel	\$ 75.00
7802-014	Methane (CH ₄)	50% LEL	34 L	Air	Aluminum	\$ 200.00
7802-038	Methane (CH ₄)	99.9% vol.	34 L	N ₂	Aluminum	\$ 200.00
7803-068	Methyl mercaptan (CH ₃ SH)	3 ppm	58 L	N ₂	Aluminum	\$ 250.00
7802-111	Pentane (C ₅ H ₁₂)	50% LEL	34 L	Air	Steel	\$ 75.00
7802-205	Phosphine (PH ₃)	5 ppm	34 L	N ₂	Aluminum	\$ 320.00
7802-012	Propane (C ₃ H ₈)	50% LEL	34 L	Air	Steel	\$ 75.00
7803-025	Nitric oxide (NO)	50 ppm	58 L	N ₂	Aluminum	\$ 320.00
7802-027	Nitrogen dioxide (NO ₂)	10 ppm	34 L	N ₂	Aluminum	\$ 320.00
7802-020	Nitrogen (N ₂)	99.99% vol.	34 L	N/A	Steel	\$ 75.00
7803-020	Nitrogen (N ₂)	99.99% vol.	105 L	N/A	Aluminum	\$ 200.00
7802-026	Sulfur dioxide (SO ₂)	5 ppm	34 L	N ₂	Aluminum	\$ 200.00
7802-066	Sulfur dioxide (SO ₂)	10 ppm	34 L	N ₂	Aluminum	\$ 200.00
7802-056	Zero gas (O ₂) (Impurity free air)	20.9%	34 L	N ₂	Aluminum	\$ 150.00
7802-006	Zero gas (O ₂) (Impurity free air)	20.9%	34 L	N ₂	Steel	\$ 75.00
7803-006	Zero gas (O ₂) (Impurity free air)	20.9%	105 L	N ₂	Aluminum	\$ 200.00

* For 34 L steel cylinder use regulators with inside (female) thread. See applicable product price sheet for regulator details. For 103 L steel and all aluminum cylinders use regulators with outside (male) thread. See applicable product price sheet for regulator details.

** Requires 1 lpm flow when using fixed flow regulators.

Calibration Gas Pricing

For Portable Instruments and Respiratory Air Monitors



All-in-one multi component calibration gas mixtures

Part Number	LEL (CH ₄)	O ₂	CO	H ₂ S	CO ₂	SO ₂	Size	Balance	Cylinder	Price
7802-016	50%	18%	200 ppm	-	-	-	34 L	N ₂	Steel	\$ 75.00
7802-030	50%	18%	200 ppm	20 ppm	-	-	44 L	N ₂	Aluminum	\$ 200.00
7803-030	50%	18%	200 ppm	20 ppm	-	-	58 L	N ₂	Aluminum	\$ 250.00
7802-017	50%	18%	200 ppm	20 ppm	4% vol.	-	34 L	N ₂	Aluminum	\$ 250.00
7803-017	50%	18%	200 ppm	20 ppm	4% vol.	-	58 L	N ₂	Aluminum	\$ 420.00
7802-037	50% (Pentane Equivalent)	18%	200 ppm	20 ppm	-	-	34 L	N ₂	Aluminum	\$ 200.00
7802-041	50%	18%	200 ppm	20 ppm	-	5 ppm	34 L	N ₂	Aluminum	\$ 420.00
7802-051	50%	18%	200 ppm	20 ppm	-	10 ppm	34 L	N ₂	Aluminum	\$ 420.00
7803-041	50%	18%	200 ppm	20 ppm	-	5 ppm	58 L	N ₂	Aluminum	\$ 575.00
7803-051	50%	18%	200 ppm	20 ppm	-	10 ppm	58 L	N ₂	Aluminum	\$ 575.00

Regulators

Part Number	Description	Flow	Gauge	On/Off	Cylinders	Exotic gases*	Price
2603-020	Regulator, Fixed Flow	0.5 lpm	Yes	Yes	34 L Steel	No	\$ 160.00
2603-025	Regulator, Fixed Flow	0.5 lpm	Yes	Yes	103 L / 105 L Steel and any Aluminum	No	\$ 160.00
2603-026	Regulator, Fixed Flow	1 lpm	Yes	Yes		Yes	\$ 160.00
1419-216	Regulator, Demand Flow – with inside thread C10 connection	3 lpm max	Yes	No	34 L Steel	No	\$ 420.00
1419-217	Regulator, Demand Flow - disposable cylinders with outside thread CGA600	3 lpm max	Yes	No	34 L Steel	No	\$ 420.00

* HCl/Cl₂, C₂H₄O, ClO₂, HF, O₃

Please note: Shipping HAZMAT requires licensure and additional shipping costs.

GfG reserves the right to change part numbers, prices and/or technical information without notice. All rights reserved to correct typographical errors. All prices are listed in US dollars.

2017 Rev. 2 (03/29/17)



GfG Instrumentation

1194 Oak Valley Drive, Suite 20, Ann Arbor, MI 48108 USA
Phone: (734) 769-0573 • Toll Free (USA / Canada): (800) 959-0329
Website: www.goodforgas.com • info@gfg-inc.com
Worldwide Manufacturer of Gas Detection Solutions

Portable Gas Detector Warranty

For Portable/RAM Instruments, Accessories and Sensors

GfG Instrumentation warrants our products to be free from defects in material and workmanship when used for their intended purpose, and agrees to remedy any such defect or to furnish a new part (at the option of GfG Instrumentation) in exchange for any part of any product that we manufacture that under normal use is found to be defective; provided that the product is returned, by the purchaser, to GfG's factory, intact, for our examination, with all transportation costs prepaid, and provided that such examination reveals, in our judgment, that it is defective.

This warranty does not extend to any products that have been subjected to misuse, neglect, accident, or unauthorized modifications; nor does it extend to products used contrary to the instructions furnished by us or to products that have been repaired or altered outside of our factory. No agent or reseller of GfG Instrumentation may alter the above statements.

THIS WARRANTY IS EXPRESSLY IN LIEU OF ANY AND ALL OTHER WARRANTIES AND REPRESENTATIONS, EXPRESS OR IMPLIED, INCLUDING BUT NOT LIMITED TO, THE WARRANTY OF FITNESS FOR A PARTICULAR PURPOSE. GfG WILL NOT BE LIABLE FOR LOSS OR DAMAGE OF ANY KIND CONNECTED TO THE USE OF ITS PRODUCTS OR FAILURE OF ITS PRODUCTS TO FUNCTION OR OPERATE PROPERLY.

Instrument and Accessory Warranty Periods

Product(s)	Warranty Period
G450, G460, Micro IV Portable Monitors and RAM 744 and RAM 4021 Respirable Airline Monitors	Limited lifetime warranty on electronics to the original purchaser (as long as the instrument is in service)
Battery pack – G450 & G460	Two years from the date of purchase
Battery packs and chargers, sampling pumps and other components, which by their design are consumed or depleted during normal operation, or which may require periodic replacement	One year from the date of purchase
RAM - Filters and other components which by their design are consumed or degraded in normal operation, or which may require periodic replacement	N/A

Sensor Warranty Periods, by Instrument Installed

Instrument(s)	Sensor Type	Warranty Period
AGM C, CGM II (Purchased before January 1, 2007)	LEL**, O ₂ , CO, H ₂ S and DualTox	1 Year
AGM C, CGM II, G333, G600, G750, G850, Micro III	LEL**, O ₂ , CO, H ₂ S, DualTox and COSH (CO & H ₂ S)	2 Years
	All Other Sensors	1 Year
G450 (Purchased before November 1, 2006)	LEL**, O ₂ , CO, H ₂ S and COSH (CO & H ₂ S)	2 Years
G450*, G460*, Micro IV*	Standard LEL**, O ₂ , CO, CO-H, H ₂ S, COSH (CO & H ₂ S) and NDIR (CO ₂ and combustible)	3 Years
	Unfiltered LEL**, Cl ₂ , ClO ₂ , C ₂ H ₄ O, H ₂ , HCN, NO ₂ , NO, PH ₃ , SO ₂ , PID***	2 Years
	CH ₃ SH, NH ₃ , HF, HCl, O ₃ , SiH ₄ , THT	1 Year
	COCl ₂	6 Months
All Airline (RAM 744, 4021 & 50)	CO, CO-H, O ₂ , Dew Point	1 Year
All Others	All	1 Year

* Optional 6-year extended warranties available on certain sensor configurations (not including all O₂ and LEL sensors).

** Damage to combustible gas sensors by acute or chronic exposure to known sensor poisons such as volatile lead (aviation gasoline additive), hydride gases such as phosphine, and volatile silicone gases emitted from silicone caulks/sealants, silicone rubber molded products, laboratory glassware greases, spray lubricants, heat transfer fluids, waxes & polishing compounds (neat or spray aerosols), mold release agents for plastics injection molding operations, waterproofing formulations, vinyl & leather preservatives, and hand lotions which may contain ingredients listed as cyclomethicone, dimethicone and polymethicone (at the discretion of GfG's Instrument Service department) void GfG Instrumentation's Standard Warranty as it applies to the replacement of combustible gas sensors.

*** PID sensor electronics warranty is for the lifetime of the sensor. The PID 10.6eV replacement lamp warranty is for 2 years.

All rights reserved to correct typographical errors.



GfG Instrumentation

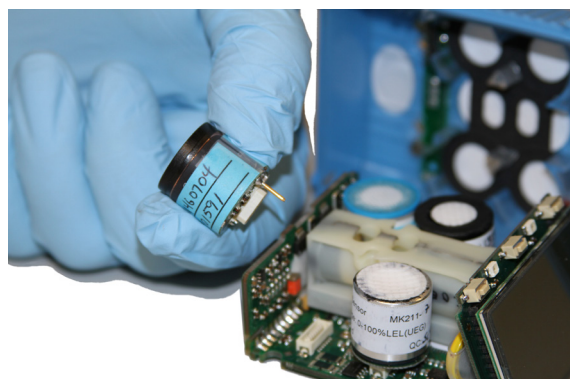
1194 Oak Valley Drive, Suite 20, Ann Arbor, MI 48108 USA
 Phone: (734) 769-0573 • Toll Free (USA / Canada): (800) 959-0329
 Website: www.goodforgas.com • info@gfg-inc.com
 Worldwide Manufacturer of Gas Detection Solutions

GfG Instrumentation

Customer Support and Service



Customer Service Toll-Free 800-959-0329
service@gfg-inc.com
orders@gfg-inc.com



The highly qualified service technicians in GfG Instrumentations customer service department are committed to delivering the best customer service in the industry.

Gas monitors require regular calibration to protect workers from gas hazards due to inaccurate readings. Monitors require calibration for a number of reasons; normal sensor degradation over a period of time, exposure to extreme temperature or humidity conditions, exposure to high levels of gas, damage or improper maintenance.

GfG's factory trained technicians will perform a complete inspection and analysis of all portable instruments and components. Communication of repair status and estimates are provided. And a final inspection is performed by a certified Quality Assurance technician.

Service Includes:

- Complete inspection and analysis
- Repairs are performed at GfG manufacturing facility
- NIST calibration certificate (if applicable)
- Final Quality Assurance testing
- Expedited service turnaround available

Repair and Calibration

Repair Services

Description	Price
Bench fee for portable instrument repairs	\$ 100.00
Inspection fee for monitors returned without repair	\$ 40.00
G450 Factory refurbishment (includes 4 new sensors, housing front/back, filters, alligator clip and alkaline battery pack) P/N 1450-RFB-A*	\$ 450.00
G450 Factory refurbishment (includes 4 new sensors, housing front/back, filters, alligator clip and rechargeable NiMH battery pack) P/N 1450-RFB-R*	\$ 450.00
G450 Factory refurbishment (includes 4 new sensors, housing front/back, filters, alligator clip and rechargeable NiMH with lights battery pack) P/N 1450-RFB-F*	\$ 450.00

* Shipping costs are not included.

Calibration Services

Description	Price
Bench fee for calibration (NIST calibration certificate included if applicable)	\$ 100.00

GfG reserves the right to change part numbers, prices and/or technical information without notice. All rights reserved to correct typographical errors. All prices are listed in US dollars.

2017 Rev. 2 (01/11/17)



GfG Instrumentation

1194 Oak Valley Drive, Suite 20, Ann Arbor, MI 48108 USA
Phone: (734) 769-0573 • Toll Free (USA / Canada): (800) 959-0329
Website: www.goodforgas.com • info@gfg-inc.com
Worldwide Manufacturer of Gas Detection Solutions

GfG Instrumentation Sales and Marketing Support



Toll-Free 800-959-0329
www.goodforgas.com
marketing@gfg-inc.com
info@gfg-inc.com



GfG Instrumentations integrated Sales and Marketing teams are dedicated to the support and success of our distribution lines. Through the new company website, ever increasing application notes, technical literature, presentations, webinars and hands on training, GfG strives for continual improvement of our support services.



Sales and Marketing Support

Sales Support Services

Description

Quoting assistance
Comprehensive Fixed Systems Department
Hands on training (individuals or group)
Speaking engagements
Ask Bob blog
International GfG partner network
OEM sales
Demo instruments

Sales and Marketing Materials

Description

Company website with Partner portal
Application notes
Technical notes
Powerpoint presentations
Product literature bulk printing
AIHA PDC courses
Webinars
Promotional GfG logo items
Tradeshow banner and GfG table cloth for loan
Product comparison charts
Image library for download
Spanish support materials
Distributor catalog ad content
Distributor website product / image content



This image shows a full page of blank, lined paper. It features approximately 28 horizontal blue or grey lines spaced evenly apart, typical of notebook paper. The lines extend across the entire width of the page, leaving small margins at the top and bottom. There are no vertical lines, text, or other markings on the page.



This image shows a full page of white paper with horizontal blue or grey ruling lines. The lines are evenly spaced and run across the width of the page, typical of notebook paper. There are no margins, text, or other markings on the page.

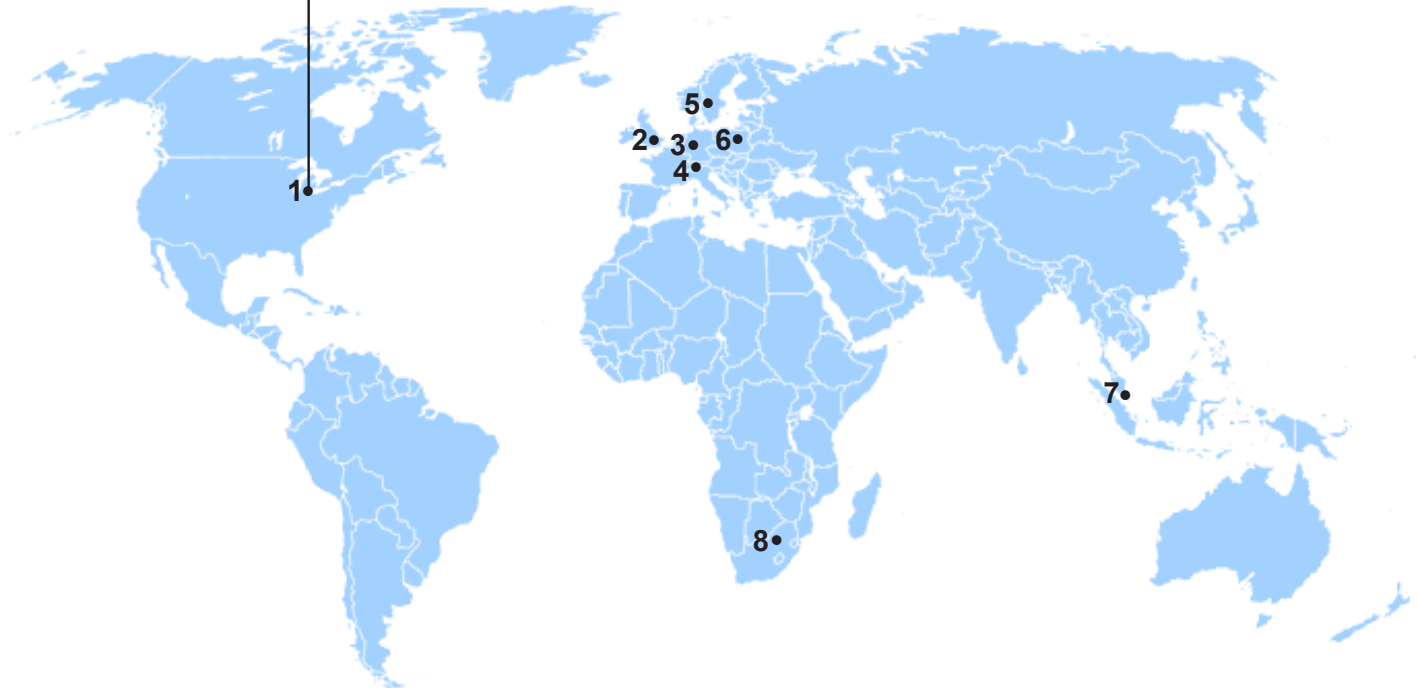


GfG Worldwide

1. GfG Instrumentation, Inc.

1194 Oak Valley Dr. Suite 20
Ann Arbor, MI 48108 USA

US/Canada: (800) 959-0329
US/Canada Fax: (734) 769-1888
International: +1 734 769 0573
International Fax: +1 734 769 1888
Website: www.goodforgas.com



2. GfG Europe Ltd.

Unit 8, Griggs Business Centre
West Street
Coggeshall
Essex CO6 1NT
UK
Phone: +44 (0) 1376 561463
Fax: +44 (0) 1376 561704

3. GfG Germany

Gesellschaft für Gerätebau mbH
Klönnestraße 99
D-44143 Dortmund
Germany
Phone: +49 (0) 231 - 564 000
Fax: +49 (0) 231 - 516 313

4. GfG AG

Im Gassacher 6
CH - 8122 Binz
Switzerland
Phone: +41 - 44 982 12 90
Fax: +41 - 44 982 12 91

5. GfG Nordic

Nolgårdsvägen 15
663 41 Hammarö
Sweden
Phone: +46 (0) 54-51 99 00
Fax: +46 (0) 54-52 15 21

6. GfG Polska Sp.z o.o

ul. Chopina 16
PL 05-085 Kampinos
Poland
Phone: +48 -(0) 22 796-25 -51
Fax.: +48 (0) 22 796 80 61

7. GfG Asia Pacific Pte. Ltd.

315, Outram Road, Unit 10-02B
Tan Boon Liat Building
SGP - 169-074
Singapore
Phone: +656 - 227 4346
Fax: +656 - 227 4347

8. GfG (Pty) Ltd.

7 Voortrekker Road, Mindalore North -
Krugersdorp
P. O. Box 6004
ZA - Westgate 1734
South Africa
Phone: +27 11 955-4862
Fax: +27 11 955-4741



Technology for people and the environment

GfG Instrumentation, Inc.

1194 Oak Valley Dr.
Suite 20
Ann Arbor, MI 48108
USA

US/Canada: (800) 959-0329
US/Canada Fax: (734) 769-1888
International: +1 734 769 0573
International Fax: +1 734 769 1888
Website: www.goodforgas.com

USA and Canada	info@gfg-inc.com
Latin America	info@gfg-inc.com
Germany	info@gfg-mbh.com
South Africa	gfgsa@icon.co.za
Asia Pacific	info@gasdetection.asia
Europe	info@gfgeurope.com
Switzerland	info@gfg.ch



GfG Instrumentation

Worldwide Manufacturer of Gas Detection Solutions

2017 Portable Price Catalog Rev. 3.1 (04/12/17)